

# HCV02 Hygienic Check Valve

HCV02-TB  
05/07

# Staitech

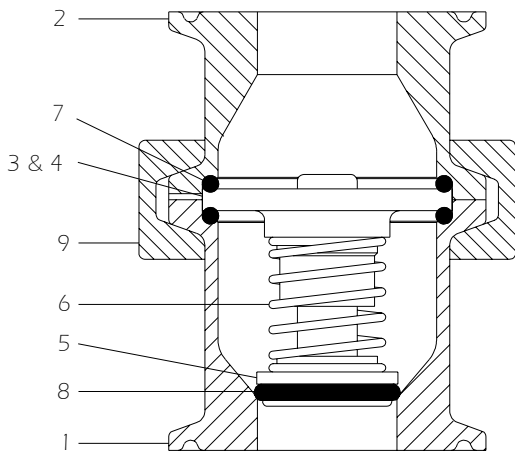


Illustration showing valve concentric connections

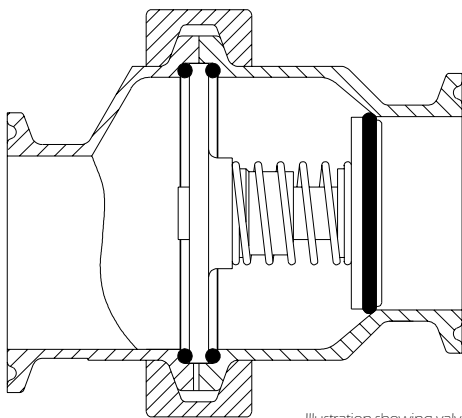


Illustration showing valve eccentric connections

## HCV02 Hygienic Check Valve

HCV02 hygienic check valves are manufactured in 316L stainless steel and are intended for use in water, process fluid and gas applications. All wetted surfaces are finished to 0.4 microns Ra, with electropolishing offered as an option. Where valves are to be installed horizontally eccentric versions are also available - HCV02E. The standard opening pressure for all valves is 35mbarg, with alternative spring ranges also offered. Seal materials are FDA compliant. For steam duty Staitech recommend the use of their HCV04 valve which has metal-metal seating.

### Product specification

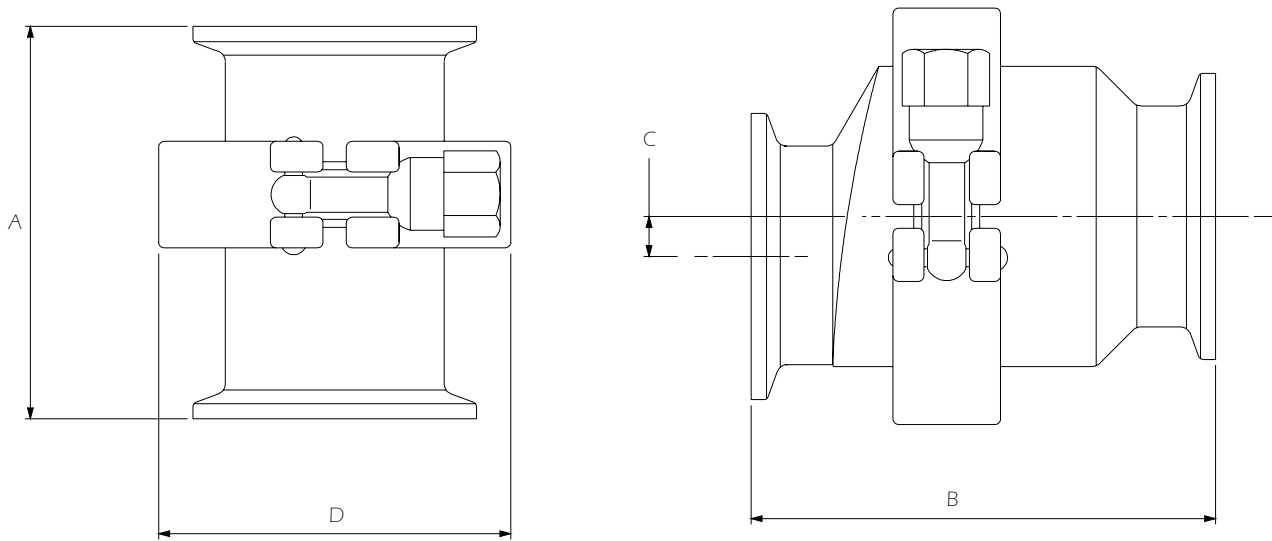
Sizes	1/2", 3/4", 1", 1-1/2", 2", 2-1/2", 3" & 4"
Connections	Tri-Clamp® compatible or weld end
Maximum operating pressure	10 barg
Standard opening pressure(in horizontal)	35 mbarg
Maximum allowable temperature with:	
EPDM seals	135°C
FEP-Silicone*, Viton & Silicone seals	200°C
Surface finish	
Internal	0.4 microns Ra
External	0.8 microns Ra

Options: Alternative opening pressures, electropolished finish, USP Class VI elastomer seals.

### Materials of construction

1.	Inlet body	316L Stainless steel
2.	Outlet body	316L Stainless steel
3.	Guide plate	316L Stainless steel
4.	Stem guide	TFM PTFE
5.	Stem	316L Stainless steel
6.	Spring	316 Stainless steel
7.	Body seals*	FEP-Silicone, EPDM, Viton or Silicone
8.	Seat seal*	FEP-Silicone, EPDM, Viton or Silicone
9.	Clamp	304 Stainless steel

\*FEP-Silicone seals are FDA & USP Class VI compliant. All other seal materials are FDA compliant only.



**Dimensions(mm)**

Size	A (clamp)	A (weld)	B (clamp)	B (weld)	C	D	Weight (kg)
1/2"	80	118	-	-	-	60	0.5
3/4"	80	111	85	115	9.5	60	0.5
1"	70	113	70	107	6.3	60	0.6
1-1/2"	80	110	82	110	7.0	78	0.9
2"	80	120	90	120	7.0	90	1.2
2-1/2"	95	122	110	137	14.3	120	1.6
3"	125	145	140	160	14.3	135	2.4
4"	155	160	170	175	21.0	180	3.8

\*Tube extensions are 28mm long. Longer extensions also available. 1/2" HCV02E not available.