

# HST30 & HST30TC Clean Steam Traps

HST30-TB  
05/07

# Staitech

## HST30 & HST30TC Clean Steam Traps

The HST30 and HST30TC ranges of thermostatic traps are designed to remove condensate from clean steam systems in applications including main line drainage, sterile barriers and block and bleed arrangements.

While both trap designs utilise a common element, the HST30 has a bolted centre flange, and the HST30TC a standard 2-piece clamp closure. The thermostatic element used in the HST30 traps is of balanced pressure design, whereby any reduction in the temperature of condensate in relation to the system temperature causes the bellows to contract, thus allowing condensate to drain from the trap. This operation typically takes place at 3-5°C below steam saturation temperature at any given system pressure.

Material certification is available covering all models, which where applicable, also meet current ASME BPE design criteria.

All trap components are degreased and rinsed in an ultrasonic bath using deionised water prior to assembly. Once assembled, traps are capped and sealed in a protective polythene bag and individually boxed.

### Features offered by the HST30 & HST30TC include:

- 316/316L stainless steel construction - provides optimum corrosion resistance.
- Crevice-free design - eliminates possibility of condensate or process fluid retention.
- Near-to-steam operating characteristics - ensures consistent system temperature.

### Flow capacities

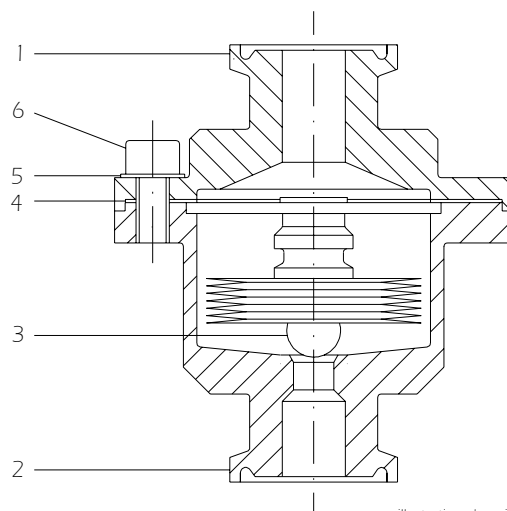
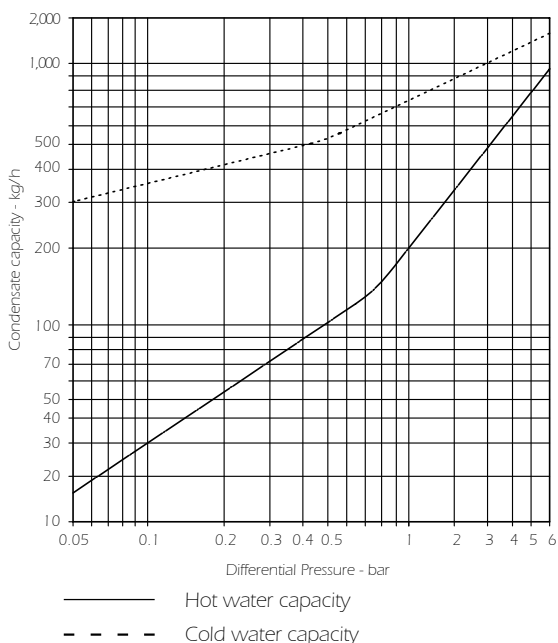


illustration showing HST30

### Materials of construction

1.	Inlet connection	316L Stainless steel
2.	Outlet connection	316L Stainless steel
3.	Element assembly	316/316L Stainless steel
4.	Seal	- HST30 PTFE composite - HST30TC PTFE-Viton envelope gasket
5.*	Label	304 Stainless steel
6.*	Screw	Stainless steel
7.**	Body clamp	304 Stainless steel

\*Applicable to HST30 only \*\* Applicable to HST30TC only  
Both seal material types are FDA compliant

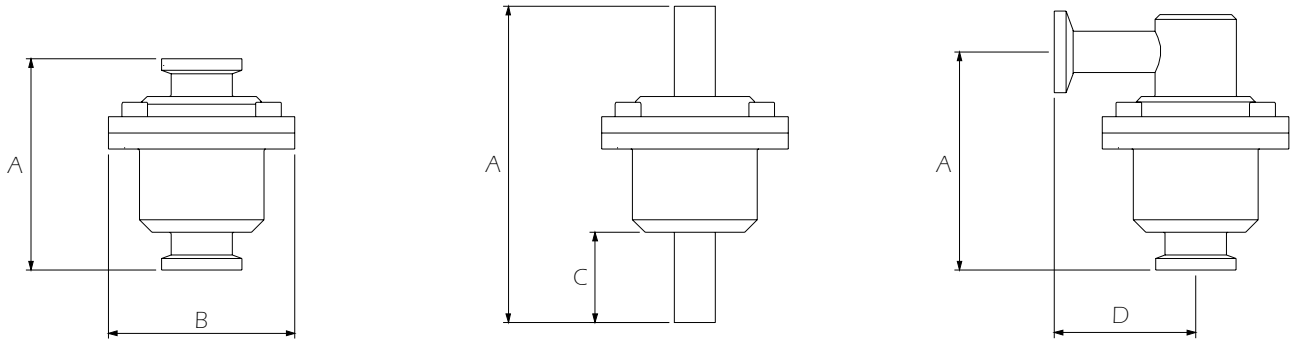
### Product Specification

Sizes	1/2", 3/4" & 1"
Standard connections	Tri-Clamp® compatible Horizontal inlet
Connection options	O.D. Tube (including 3/8") Threaded & butt weld Clamp & tube weld to ISO, DIN & SMS standards
HST30TC clamp options	Hexagon nut or wing nut
Maximum operating pressure (PMO)	6.0 barg
Maximum allowable temperature (TMA)	170°C
Maximum allowable pressure (PMA)	8.0 barg
Surface finish*	
Wetted surfaces	0.8 microns Ra
External body surfaces	1.0 micron Ra

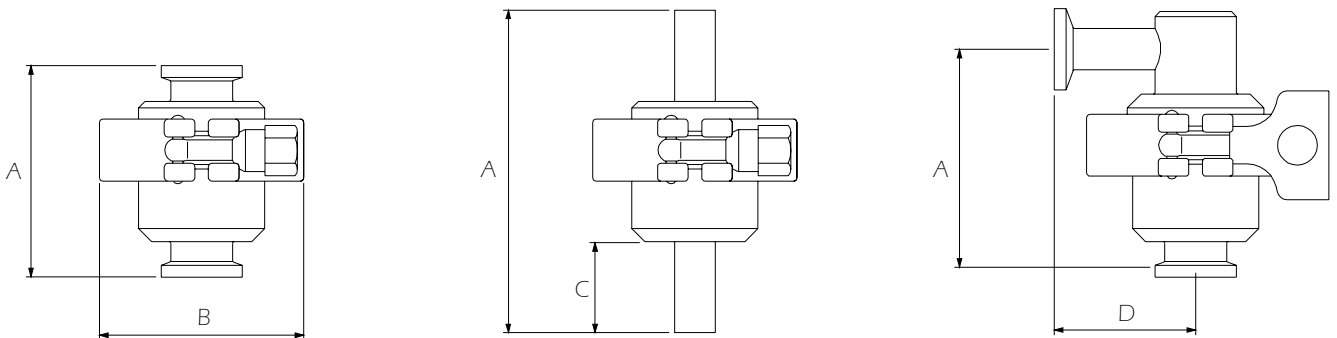
\*Optional finishes - body surfaces to 0.4 microns Ra & electropolishing

Specification subject to change without notice

HST30



HST30TC



HST30TC showing standard hexagon nut clamp closure

HST30TC showing optional wing nut clamp closure

**Dimensions(mm)**

HST30	A	B	C	D	Weight(kg)
Clamp	65	59	-	-	0.4
O.D. Tube	98	59	28	-	0.4
Horizontal inlet(1/2" & 3/4")	70	59	-	43	0.4
Horizontal inlet(1")	77	59	-	50	0.5
HST30TC					
Clamp	65	60	-	-	0.5
O.D. Tube	98	60	28	-	0.5
Horizontal inlet(1/2" & 3/4")	70	60	-	43	0.5
Horizontal inlet(1")	77	60	-	50	0.6