

for pipes up
to OD 508 mm/
20" and wall
thickness up to
15 mm/0.59"

GF 20 AVM

Pipe Cutting and Beveling Machines

A new highlight in the GF-Series of Orbitalum Tools!

The new GF machine for cutting and beveling of high, low and unalloyed metal pipes has demonstrated convincing operational results with large pipe diameters and safe and ergonomic serviceability.

A strong machine for demanding applications!

Advantages:

- For cutting pipes with ODs between 283 - 508 mm (11.14 - 20 inch) and pipe wall thicknesses of up to 15 mm (0.59 inch)
- Right-angled cutting without misalignment
- Burr-free and cold operating process
- Unique automatic process by the AVM feed module thus ensuring constant cutting
- Including a height-adjustable and robust lifting bench with a container for swarf collection
- The ergonomically designed handle enables a safer operating position; and cutting elbows is made possible without any further adjustments
- Multifunctional wrench for all setups on the machine
- Sturdy design with powerful drive
- High rotational moment for optimal cutting and beveling processes
- Optimal speed range of 50 - 163 rpm, ideal for cutting high-performance materials (Hastelloy, P91, etc.)
- Plug connection with quick-action coupling: for easy and comfortable replacement of the power cable.
- Optimized saw blade guard protects the user against flying chips

Your benefits:

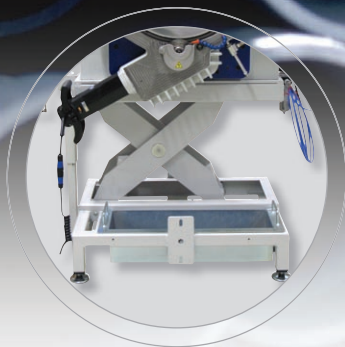
- Reduced tooling and production costs
- An even higher operating life of the tools is guaranteed by the continual cooling system (available as special accessory)
- High operating efficiency



❖ with automatic
AVM feed module

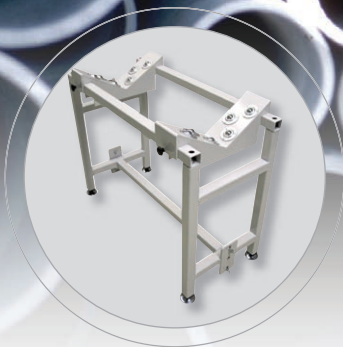


❖ inclusive of a
height-adjustable
lifting bench



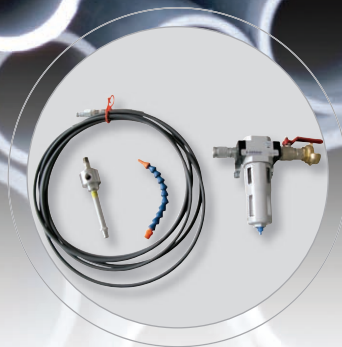
Lifting bench.

Supplied as standard. Easy mounting of the saw directly on to the plate. Mechanical height adjustment using a handwheel. Very sturdy and robust design of steel construction, which includes a swarf collector. Can also be used in combination with the Pipe Cutting and Beveling Machine RA 12.
Code 790 050 051



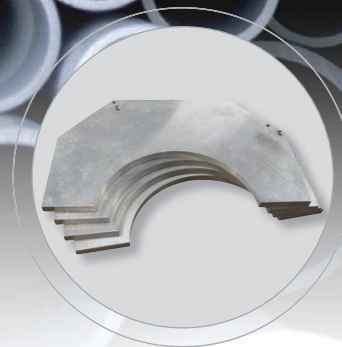
Extension unit.

Special accessory. The extension unit accurately feeds long and heavy pipes into the pipe cutter. Very robust and sturdy design with 2 V supports and stainless steel bearings. Modular construction. For pipes up to 508 mm OD (20"). Max. load 400 kg. L x W x H: 110 x 50 x 95 cm (43.3" x 19.7" x 37.4")
Code 790 050 061



Continuous cooling system.

Special accessory. To increase the service life of the saw blade and for improved surface finish to the pipe. Infinitely variable. The cooling air rate can be configured to the optimum level for your application. Also suitable for cutting plastic pipes. Cooling without coolants. Compressed-air-operated design.
Code 790 050 773



Aluminum clamping shells.

Special accessories. Ideal for clamping thin-walled pipes. When ordering, please indicate the outside diameter of the tube to be worked on.

Pipe Cutting and Beveling Machine

Technical data	GF 20 AVM*
Weight approx.	500 kg (1,102.31 lbs)
Dimensions incl. height-adjustable lifting bench, approx.	145 - 171 x 94 x 63 cm 57.1 - 67.3 x 37 x 24.8 in
Power	1.8 kW / 2.18 HP (AVM: 50 W)
Built-in electronic variable cutting speed with restart inhibitor	50 - 163 rpm
Protection class	Protection isolated class I, DIN VDE 0740
Version 220 - 240 V, 50/60 Hz Version 110 - 120 V, 50/60 Hz	Code 790 050 001 Code 790 050 002
Vibration level in accordance with DIN EN 28662, Part 1	2.5 m/s ²
Sound pressure level at the workplace	approx. 75 dB (A)

Application range	GF 20 AVM*
Pipe OD	283 - 508 mm / 11.14 - 20 inch
Pipe ID min. Saw blade Ø 80 mm/3.150 inch	295 mm / 11.6 inch
Pipe ID min. Saw blade Ø 100 mm/3.937 inch	275 mm / 10.8 inch
Wall thickness max.	15 mm / 0.59 inch
Pipe materials	Steel, stainless steel, copper, cast, iron, aluminum, synthetic.

* The automatic feed module AVM is already fitted to the pipe cutter upon delivery.

The technical data is non-binding. It does not include any assurance of properties. Subject to change. Our general terms and conditions apply.

Technical data	Lifting bench
Weight approx.	500 kg (1,102.31 lbs)
Dimensions (h x w x d) approx.	44.5 - 70.5 x 94 x 63 cm 17.5 - 27.8 x 37 x 24.8 inch
Max. load	1.200 kg (2,645.52 lbs)
Height adjustable min. - max. approx.	44.5 - 70.5 cm (17.5 - 27.8 inch)

Machine comes with:

- 1 Pipe Cutting and Beveling Machine GF 20 AVM*
- 1 Lifting bench (Code 790 050 051)
- 1 Saw blade (Code 790 047 026)
- 1 Tool set
- 1 KSS-TOP lubricant spray pump (Code 790 060 226)
- 1 Tube of saw blade lubricant GF TOP (Code 790 060 228)
- 1 Tube of special gear oil (Code 790 041 030)
- 1 Operating instructions and spare parts list

The saw is equipped with a swivel cable.

Stamp of distributor:

© Orbitalum Tools GmbH (02.2010)

Orbitalum Tools GmbH

Sales Contact:
Tel. +49 (0) 77 31 792-786 up to -789
Fax +49 (0) 77 31 792-524
tools@orbitalum.com
www.orbitalum.com

Plant:
Division Orbitalum
Josef-Schüttler-Straße 17
78224 Singen
Germany