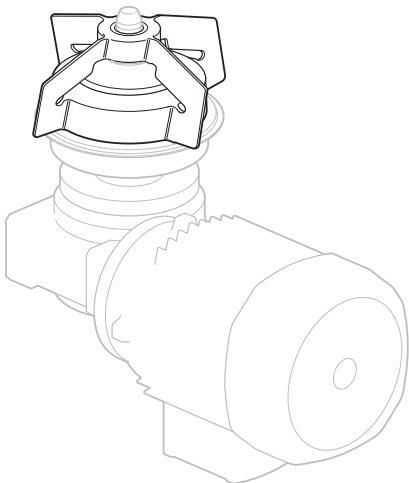
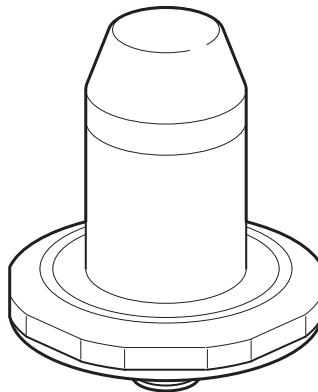
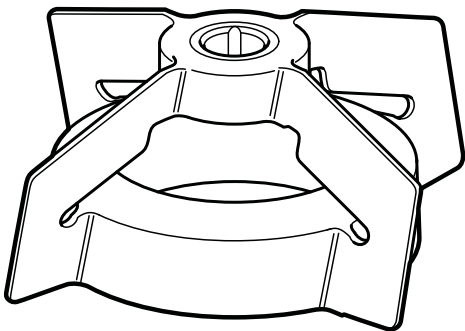




NovAseptic[®] Mixer

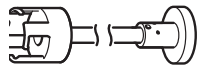
GMP Mixing Head and Male Bearing

Installation Guide

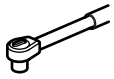


Tools Required

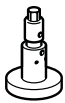
Tools listed below are not included with unit.



Multi Tool GT#/25

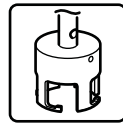


Torque Wrench



Tightening Tool GT#/26

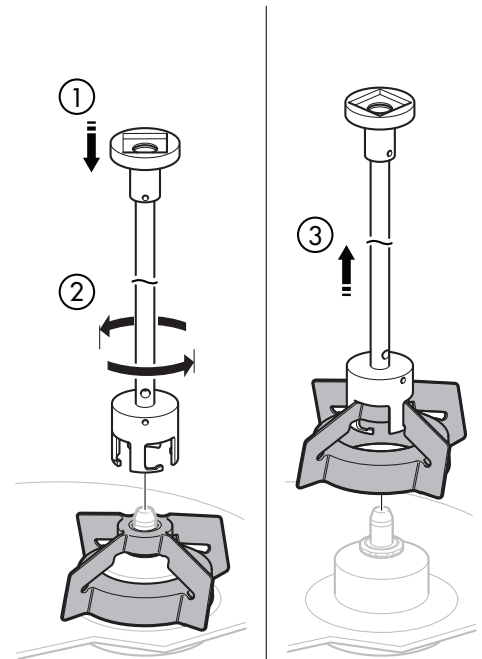
3



GMP50
GMP100
GMP500
GMP1000
GMP2000

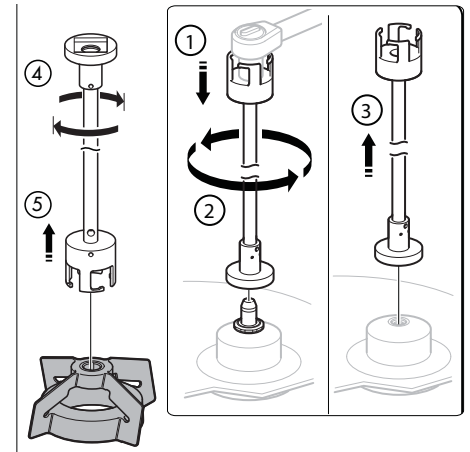
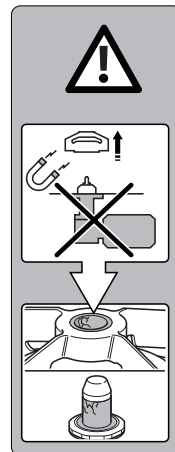
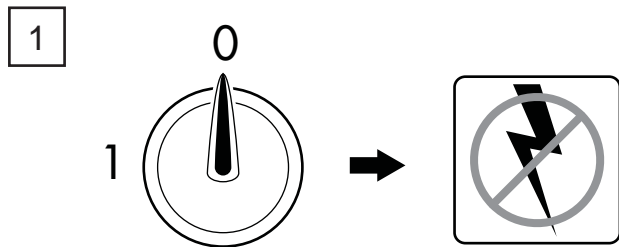


GMP5000
GMP10000
GMP20000
GMP30000

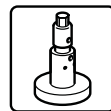
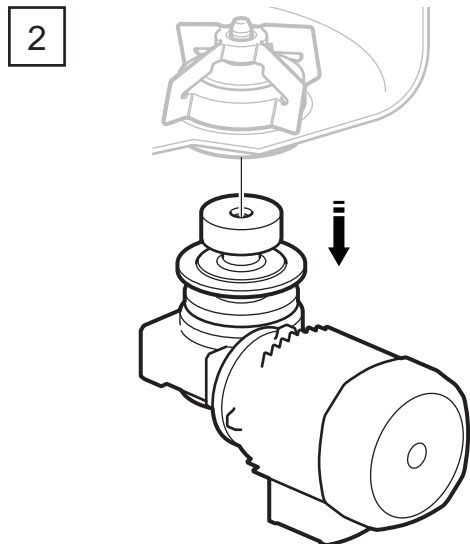


Option A

Installation Procedure



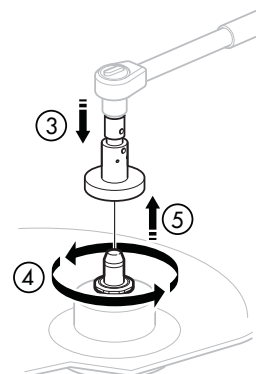
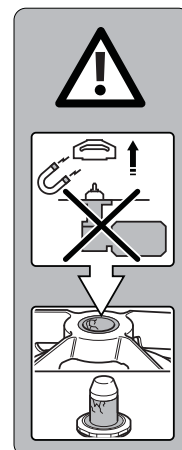
Option B

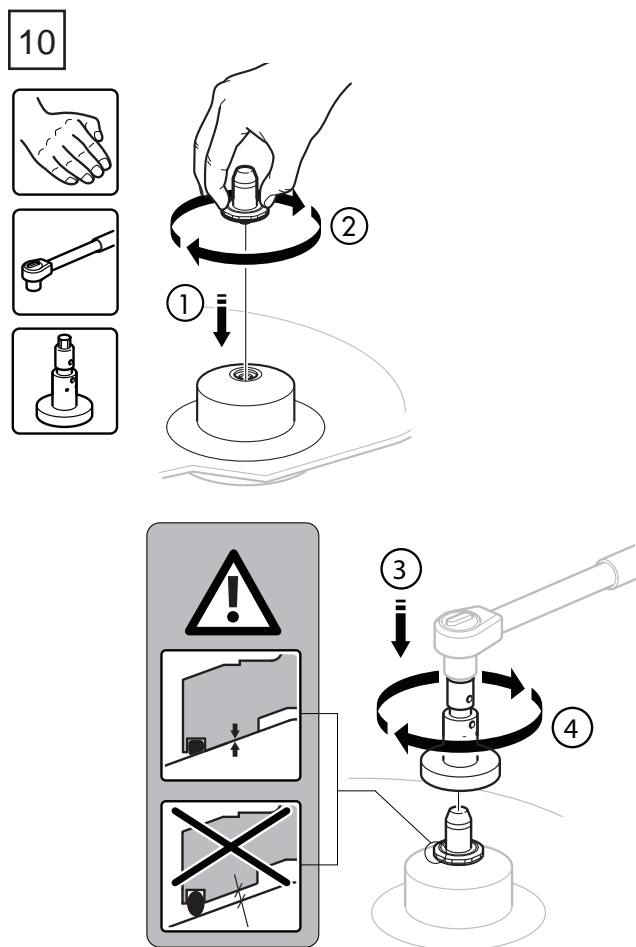
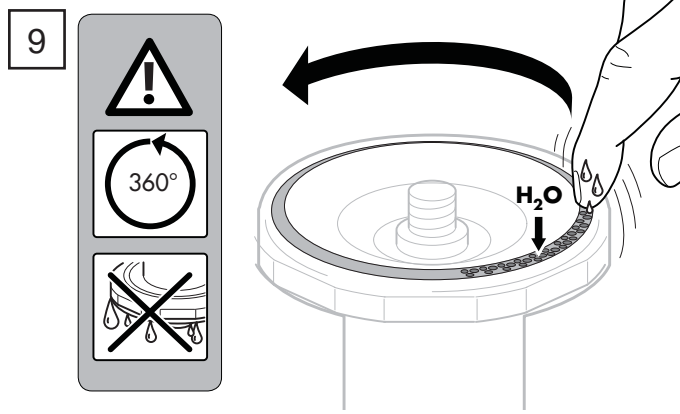
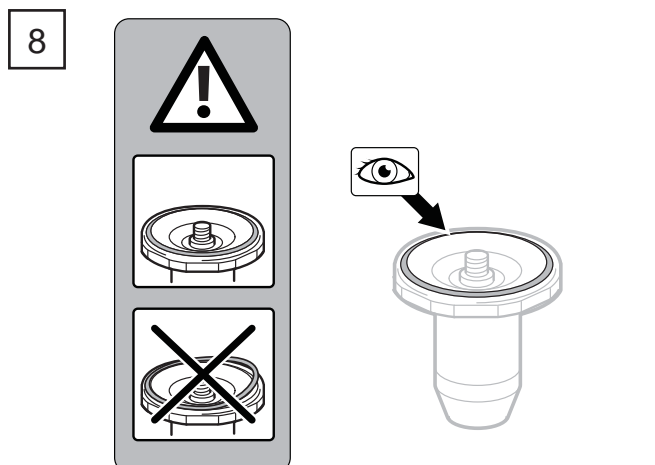
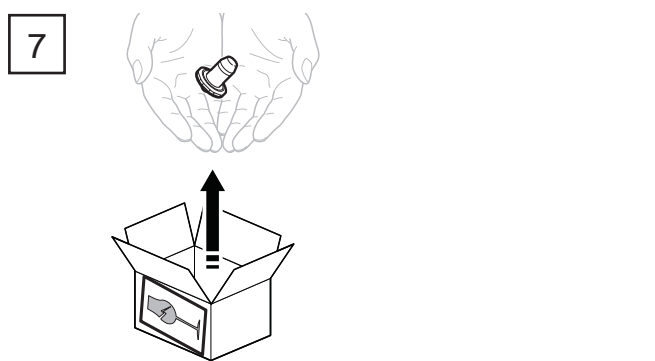
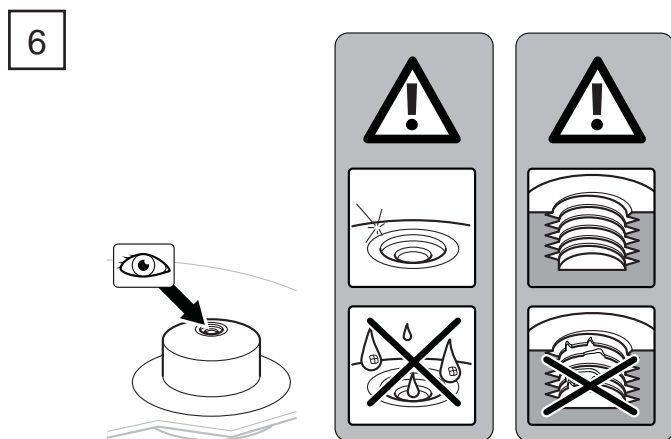
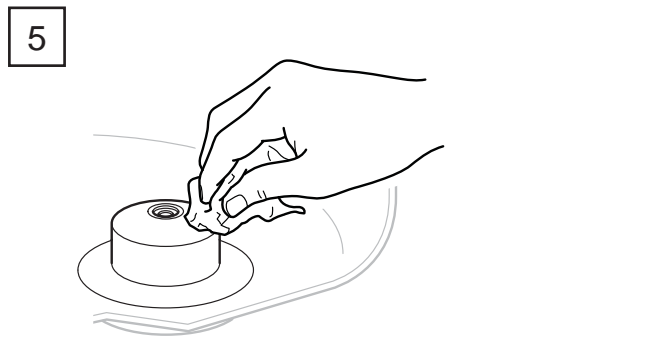
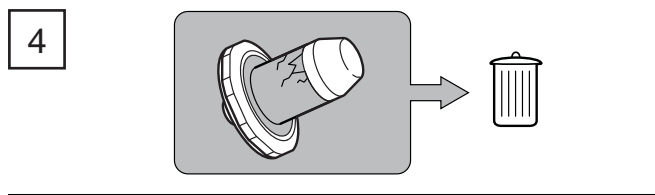


GT 12/26
GMP50
GMP100

GT 20/26
GMP500
GMP1000
GMP2000

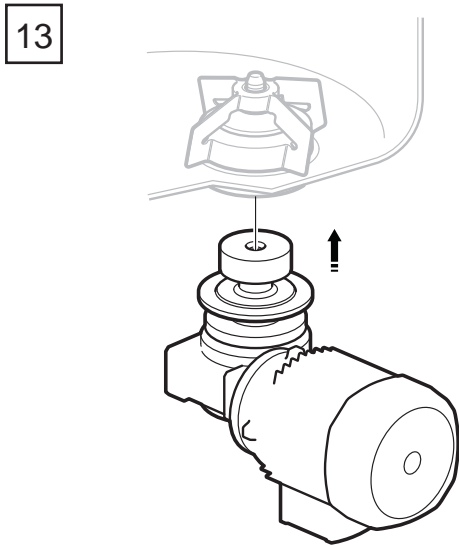
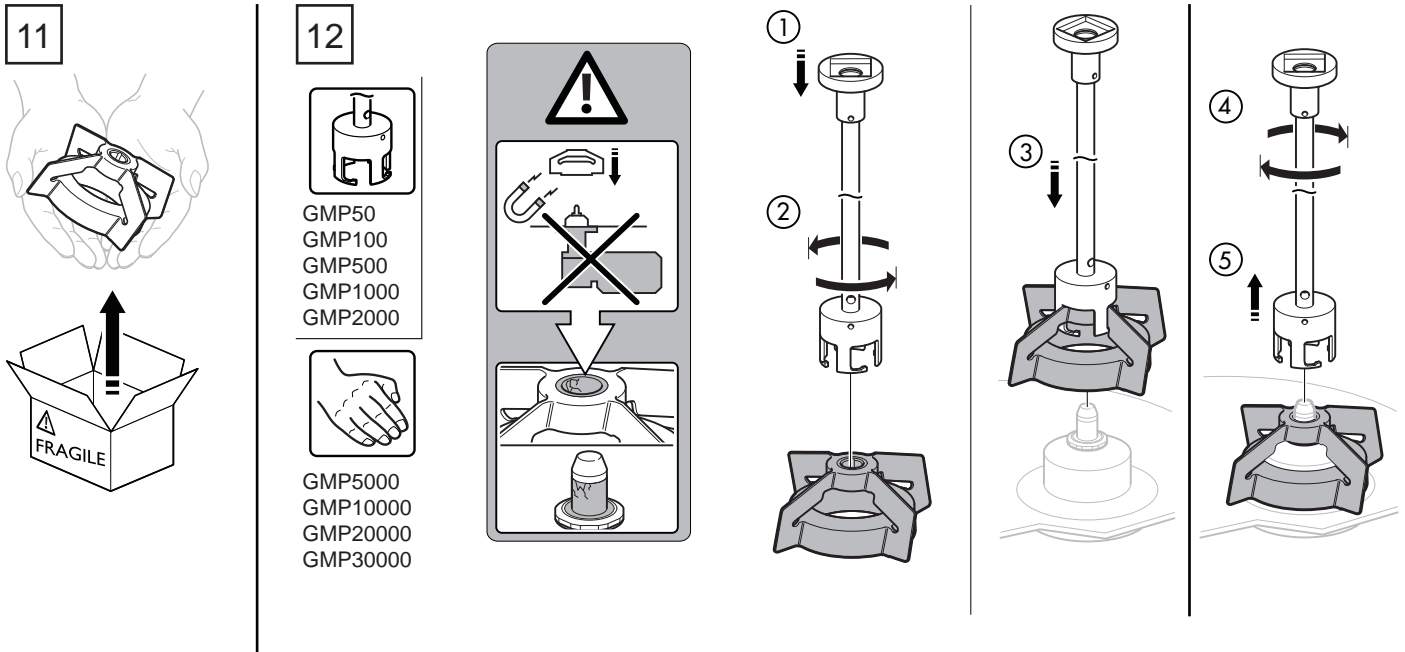
GT 30/26
GMP5000
GMP10000
GMP20000
GMP30000





Male Bearing	Torque
GM05/23	6 Nm 4.4 lbft
GM05/24	
AX05/24	
GM1/23	
GM1/24	
AX1/24	13 Nm 9.6 lbft
GM510/23	
GM510/24	
AX510/24	30 Nm 22.1 lbft
GM20/23	
GM20/24	
AX20/24	
GM50300/23	30 Nm 22.1 lbft
GM50300/24	
AX50200/24	

Note: Torque must be sufficient to compress the O-ring and achieve metal-to-metal contact.



To Place an Order or Receive Technical Assistance

For additional information call your nearest Millipore office. In the U.S. and Canada, call toll-free 1-800-MILLIPORE (1-800-645-5476) In the U.S., Canada and Puerto Rico, fax orders to 1-800-MILLIFX (1-800-645-5439).

On the Internet www.millipore.com.

Millipore and NovAseptic are registered trademarks of Millipore Corporation. The M mark is a trademark of Millipore Corporation. Specifications subject to change without notice.

00101868PU Rev. B, 06/2008. © 2007, 2008 Millipore Corporation. All rights reserved.