

Staitech

HIGH PURITY SYSTEM COMPONENTS



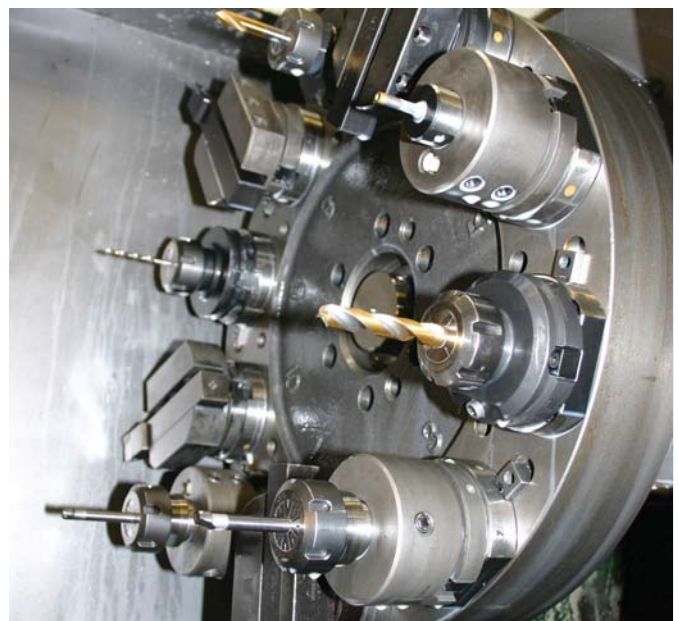
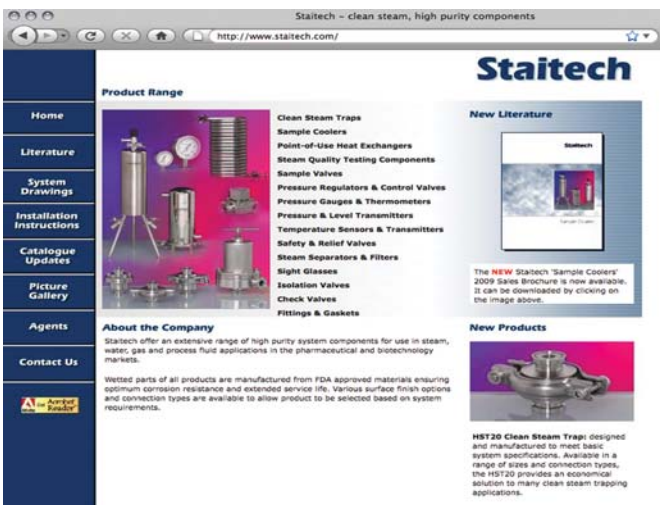
The Catalogue

Staitech is one of the UK's leading manufacturers and suppliers of high purity system components to the Pharmaceutical industry.

Located in Stroud, Gloucestershire, the company boasts a modern manufacturing facility where machining, fabrication, electropolishing and assembly is carried out.

In addition to the products designed and manufactured by Staitech, the company also stocks and distributes selected products from a number of well known manufacturers such as Steriflow, Wika and SVF Flow Controls.

This short form catalogue is intended to provide an overview of the extensive range of products available from Staitech, many of which are held in stock and ready for immediate despatch.



Certification

The required level of certification should be stated at the time of ordering. Typical documentation includes:

- Certificates of conformity
- Material certification
- FDA and USP Class VI compliance
- ADI free certificates
- PED compliance
- ATEX



Staitech

HIGH PURITY SYSTEM COMPONENTS

How to order

A simple way is to complete the order form included on page 43, or use one of the following:

By phone: +44 (0) 1453 882736

By Fax: +44 (0) 1453 882744

By Email: sales@staitech.com



Delivery

Staitech use Citylink next day couriers for deliveries within the UK.

Next day - Up to 1Kg: £15.00

Next day - Up to 10Kg: £18.50

Before 10.30am: £26.50

Please request prices for international deliveries.



Payment

Staitech accept all major credit cards, company or personal cheques.

For qualifying customers, Staitech also offer a net 30 day payment account. Orders placed on account must be accompanied by a valid order number.

Address: Staitech
PO Box 152
Stroud
GL6 8YT

All orders are accepted in accordance with our standard terms and conditions which are available upon request.

Contents

Gaskets	4
Clamp Gaskets	
Orifice Plate Gaskets	
Orifice Spools	
Screen Gaskets	
Sock Screen Gaskets	
Thermocouple Gaskets	
Clamps	12
Fittings	14
Ferrules	
Reducing Ferrules	
Thick Wall Ferrules	
Pipe Adaptor Ferrules	
Instrument Ferrules	
Pipe-to-Tube Socket Weld Adaptors	
Pipe-to-Tube Adaptors	
Tank Weld Fittings	
Threaded Adaptors	
BSP-to-Tube Adaptors	
Blank Caps	
Hose Adaptors	
Reducers	
Elbows	
Tees and Crosses	
Instrument Tees	
Sample Valves	24
Sample Coolers	25
Pressure Gauges	26
Pressure Transmitters	28
Thermometers & Temperature Sensors	29
Sight Glasses	30
Isolation Valves	33
Check Valves	35
Steam Traps	38
Safety Valves	40
Staitech Product Overviews	42
Control Valves	
Steam Separators and filters	
Heat Exchangers	
Steam Quality Testing Equipment	

Clamp Gaskets

Standard gaskets are available in a range of materials to suit 1/4" to 4" clamp fittings in accordance with BS 4825/ASME BPE dimensions. Gaskets can also be supplied in larger sizes up to 12" and in Schedule pipe and metric sizes. All gaskets are FDA CFR 21 compliant and meet USP Class VI criteria. Full batch certification is available for all gasket types.



EPDM - Black									
	1/4"	1/2"	3/4"	1"	1-1/2"	2"	2-1/2"	3"	4"
Price (£)	1.30	1.15	1.20	1.50	1.35	1.80	2.10	2.55	2.85
Order Ref	EBK-G-025	EBK-G-050	EBK-G-075	EBK-G-100	EBK-G-150	EBK-G-200	EBK-G-250	EBK-G-300	EBK-G-400
EPDM - Lipped Type - Black									
	1/4"	1/2"	3/4"	1"	1-1/2"	2"	2-1/2"	3"	4"
Price (£)	-	-	-	1.65	1.50	1.95	2.30	2.80	3.15
Order Ref	-	-	-	EBK-GL-100	EBK-GL-150	EBK-GL-200	EBK-GL-250	EBK-GL-300	EBK-GL-400
Viton - Black									
	1/4"	1/2"	3/4"	1"	1-1/2"	2"	2-1/2"	3"	4"
Price (£)	-	2.45	2.55	2.85	2.55	3.10	3.95	5.15	7.25
Order Ref	-	VBK-G-050	VBK-G-075	VBK-G-100	VBK-G-150	VBK-G-200	VBK-G-250	VBK-G-300	VBK-G-400
Viton - Lipped Type - Black									
	1/4"	1/2"	3/4"	1"	1-1/2"	2"	2-1/2"	3"	4"
Price (£)	-	-	-	3.15	2.80	3.50	4.40	5.80	8.25
Order Ref	-	-	-	VBK-GL-100	VBK-GL-150	VBK-GL-200	VBK-GL-250	VBK-GL-300	VBK-GL-400
Silicone - Clear Platinum Cured									
	1/4"	1/2"	3/4"	1"	1-1/2"	2"	2-1/2"	3"	4"
Price (£)	-	1.60	1.70	1.90	1.80	2.10	2.35	2.55	2.85
Order Ref	-	SPT-G-050	SPT-G-075	SPT-G-100	SPT-G-150	SPT-G-200	SPT-G-250	SPT-G-300	SPT-G-400
Silicone - Clear Peroxide Cured									
	1/4"	1/2"	3/4"	1"	1-1/2"	2"	2-1/2"	3"	4"
Price (£)	1.40	1.35	1.40	1.60	1.45	1.75	1.95	2.15	2.35
Order Ref	SPX-G-025	SPX-G-050	SPX-G-075	SPX-G-100	SPX-G-150	SPX-G-200	SPX-G-250	SPX-G-300	SPX-G-400
Silicone - Lipped Type - Clear Platinum Cured									
	1/4"	1/2"	3/4"	1"	1-1/2"	2"	2-1/2"	3"	4"
Price (£)	-	-	-	1.90	1.80	2.10	2.35	2.55	2.85
Order Ref	-	-	-	SPT-GL-100	SPT-GL-150	SPT-GL-200	SPT-GL-250	SPT-GL-300	SPT-GL-400
PTFE - White solid moulded PTFE									
	1/4"	1/2"	3/4"	1"	1-1/2"	2"	2-1/2"	3"	4"
Price (£)	1.70	0.95	1.05	1.15	1.10	1.20	1.25	1.35	1.50
Order Ref	T-G-025	T-G-050	T-G-075	T-G-100	T-G-150	T-G-200	T-G-250	T-G-300	T-G-400
PTFE-Viton Envelope - White PTFE outer with Viton inner core									
	1/4"	1/2"	3/4"	1"	1-1/2"	2"	2-1/2"	3"	4"
Price (£)	-	3.25	3.35	3.20	3.10	3.30	3.65	4.25	8.25
Order Ref	-	TV-G-050	TV-G-075	TV-G-100	TV-G-150	TV-G-200	TV-G-250	TV-G-300	TV-G-400
PTFE-Viton Envelope - Lipped Type - White PTFE outer with Viton inner core									
	1/4"	1/2"	3/4"	1"	1-1/2"	2"	2-1/2"	3"	4"
Price (£)	-	-	-	5.25	5.00	6.35	8.50	10.65	12.65
Order Ref	-	-	-	TV-GL-100	TV-GL-150	TV-GL-200	TV-GL-250	TV-GL-300	TV-GL-400
TUF-FLEX - White PTFE bonded to an EPDM inner core									
	1/4"	1/2"	3/4"	1"	1-1/2"	2"	2-1/2"	3"	4"
Price (£)	-	11.10	11.10	11.85	11.75	12.50	14.50	19.25	24.00
Order Ref	-	TF-G-050	TF-G-075	TF-G-100	TF-G-150	TF-G-200	TF-G-250	TF-G-300	TF-G-400

Stainless Steel Infused PTFE - 50/50 PTFE/316 stainless steel composite									
	1/4"	1/2"	3/4"	1"	1-1/2"	2"	2-1/2"	3"	4"
Price (£)	-	2.45	2.50	4.05	3.75	4.60	6.35	8.95	12.60
Order Ref	-	TS-G-050	TS-G-075	TS-G-100	TS-G-150	TS-G-200	TS-G-250	TS-G-300	TS-G-400

Gylon - Blue Gylon 3504									
	1/4"	1/2"	3/4"	1"	1-1/2"	2"	2-1/2"	3"	4"
Price (£)	-	3.40	3.50	3.90	4.15	4.90	6.00	7.00	8.00
Order Ref	-	GY-G-050	GY-G-075	GY-G-100	GY-G-150	GY-G-200	GY-G-250	GY-G-300	GY-G-400

Certification - Individually certified stating batch number and cure date - £3.50 per line item

Also available

- ISO and DIN Sizes
- Coloured silicone gaskets
- PEEK lined EPDM
- Laser engraved identification detail
- Metal impregnated detectable gaskets

Flange Gaskets & O-rings

For sanitary applications where flanges are used Staitech offer a range of cut gaskets and sheet gasket materials. Available materials include PTFE, Gylon, EPDM, Viton and Silicone. Staitech also stock a wide range of FDA CFR 21 and USP Class VI certified O-rings in EPDM, Viton, Silicone and FEP encapsulated materials. For non-standard sizes Staitech also offer a bespoke moulding service. For pricing and availability consult Staitech.



Plain Orifice Plate Gaskets

Orifice plate gaskets are available both tabbed and non-tabbed. Slit gaskets allow easy removal of a solid inner disc for drilling or routine gasket replacement. All gasket elastomers are FDA CFR 21 compliant and meet USP Class VI criteria.



EPDM gasket only - Black									
	1/2"	3/4"	1"	1-1/2"	2"	2-1/2"	3"	4"	
Price (£)	34.50	34.50	17.00	15.50	20.50	23.00	27.50	31.00	
Order Ref	EBK-GOP-050	EBK-GOP-075	EBK-GOP-100	EBK-GOP-150	EBK-GOP-200	EBK-GOP-250	EBK-GOP-300	EBK-GOP-400	
Viton gasket only - Black									
	1/2"	3/4"	1"	1-1/2"	2"	2-1/2"	3"	4"	
Price (£)	34.50	34.50	29.00	26.00	34.00	39.00	45.00	55.00	
Order Ref	VBK-GOP-050	VBK-GOP-075	VBK-GOP-100	VBK-GOP-150	VBK-GOP-200	VBK-GOP-250	VBK-GOP-300	VBK-GOP-400	
Silicone gasket only - Clear Platinum Cured									
	1/2"	3/4"	1"	1-1/2"	2"	2-1/2"	3"	4"	
Price (£)	34.50	34.50	29.50	26.50	35.00	40.00	47.00	55.00	
Order Ref	SPT-GOP-050	SPT-GOP-075	SPT-GOP-100	SPT-GOP-150	SPT-GOP-200	SPT-GOP-250	SPT-GOP-300	SPT-GOP-400	
Orifice plate blank - 316 stainless steel									
	1/2"	3/4"	1"	1-1/2"	2"	2-1/2"	3"	4"	
Price (£)	17.80	17.80	14.30	14.30	15.75	20.30	27.60	35.75	
Order Ref	OP3-050	OP3-050	OP3-100	OP3-100	OP3-200	OP3-250	OP3-300	OP3-400	

See page 7 for machining options

Tabbed Orifice Plate Gaskets

Where identification is required that an orifice plate is fitted then tabbed units are available. A slit gasket once again allows easy removal of a solid inner disc for drilling or routine gasket replacement. A range of clamps are offered for use with tabbed orifice plates as outlined on pages 12 and 13. All gasket elastomers are FDA CFR 21 compliant and meet USP Class VI criteria.



EPDM gasket only - Black								
	1/2"	3/4"	1"	1-1/2"	2"	2-1/2"	3"	4"
Price (£)	43.75	43.75	51.00	52.50	55.00	69.50	83.00	109.00
Order Ref	EBK-GOPT-050	EBK-GOPT-075	EBK-GOPT-100	EBK-GOPT-150	EBK-GOPT-200	EBK-GOPT-250	EBK-GOPT-300	EBK-GOPT-400
Viton gasket only - Black								
	1/2"	3/4"	1"	1-1/2"	2"	2-1/2"	3"	4"
Price (£)	46.50	46.50	55.50	58.00	77.00	78.00	86.00	111.50
Order Ref	VBK-GOPT-050	VBK-GOPT-075	VBK-GOPT-100	VBK-GOPT-150	VBK-GOPT-200	VBK-GOPT-250	VBK-GOPT-300	VBK-GOPT-400
Silicone gasket only - Clear Platinum Cured								
	1/2"	3/4"	1"	1-1/2"	2"	2-1/2"	3"	4"
Price (£)	49.50	49.50	58.00	61.00	80.00	88.50	98.00	115.00
Order Ref	SPT-GOPT-050	SPT-GOPT-075	SPT-GOPT-100	SPT-GOPT-150	SPT-GOPT-200	SPT-GOPT-250	SPT-GOPT-300	SPT-GOPT-400
Orifice plate blank with tab - 316 stainless steel								
	1/2"	3/4"	1"	1-1/2"	2"	2-1/2"	3"	4"
Price (£)	29.85	29.85	36.50	36.50	47.50	57.75	65.90	76.00
Order Ref	OP4-050	OP4-050	OP4-100	OP4-100	OP4-200	OP4-250	OP4-300	OP4-400

One Piece Orifice Plate Gaskets

In addition to stainless steel, a range of solid orifice plates are also available in PTFE and PTFE infused stainless steel. Both plate types are FDA CFR 21 and USP Class VI compliant. As with all orifice types, plates can be drilled on site or prior to delivery.



PTFE - Solid White PTFE								
	1/2"	3/4"	1"	1-1/2"	2"	2-1/2"	3"	4"
Price (£)	10.65	10.65	21.00	21.00	23.50	33.50	40.00	66.00
Order Ref	OP5-T-050	OP5-T-050	OP5-T-100	OP5-T-100	OP5-T-200	OP5-T-250	OP5-T-300	OP5-T-400
Stainless Steel Infused PTFE - 50/50 PTFE/316 stainless steel composite								
	1/2"	3/4"	1"	1-1/2"	2"	2-1/2"	3"	4"
Price (£)	25.65	25.65	59.60	59.60	65.00	83.65	101.00	118.35
Order Ref	OP5-TS-050	OP5-TS-050	OP5-TS-100	OP5-TS-100	OP5-TS-200	OP5-TS-250	OP5-TS-300	OP5-TS-400

Orifice Spools

Two designs of orifice spool are available from Staitech. The first is a square edge design whereby the face of the orifice is flat. The second conical design utilises a cone profile to reduce the bore to the orifice size. Both orifice designs are manufactured in 316L stainless steel with wetted surfaces finished to 0.5 microns Ra. Both designs are supplied solid for drilling on site or by Staitech.



316L, 0.5 Ra		Square edge design		Conical design	
Clamp Size	Length (mm)	Order Ref	Price (£)	Order Ref	Price (£)
1/2"	40	OP1-050C	58.00	OP2-050C	58.00
3/4"	40	OP1-075C	48.00	OP2-075C	48.00
1"	40	OP1-100C	58.00	OP2-100C	58.00
1-1/2"	40	OP1-150C	66.00	OP2-150C	66.00
2"	50	OP1-200C	74.50	OP2-200C	74.50

Certification:

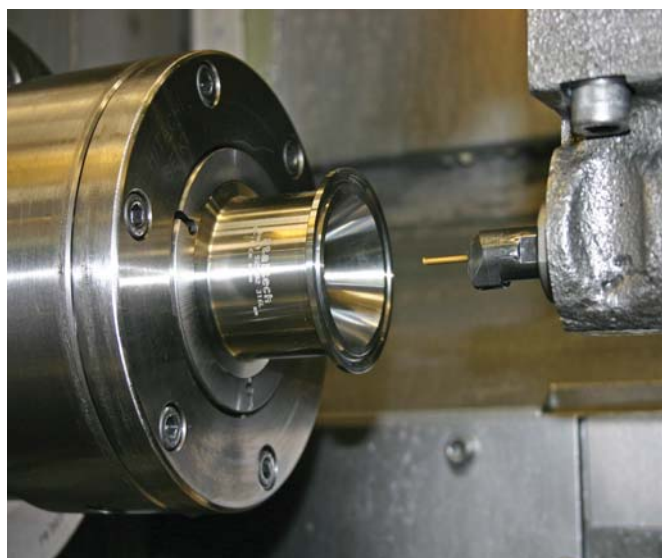
Orifice Plate Gaskets - Individually certified stating batch number and cure date - £3.50 per line item.

Orifice Spool - £3.50 per line item.

Orifice Machining

All Orifice Plate Gaskets and Orifice Spools are supplied 'blind' as standard. Staitech also offer a machining service to cover all orifice designs, with both concentric and eccentric hole machining available.

Orifice Machining				
	Concentric - Order Ref Suffix	Price (£)	Eccentric - Order Ref Suffix	Price (£)
Machining charge where 'XX' is the hole size	-C-XX	9.50	-E-XX (except conical design)	16.50



Screen Gaskets

Mesh screen gaskets are available to suit 1/2" to 4" clamp fittings in accordance with BS 4825/ASME BPE dimensions. Three standard stainless steel mesh sizes are offered, with alternative sizes also available. All gasket elastomers are FDA CFR 21 compliant and meet USP Class VI criteria.



Mesh Screen Gaskets

EPDM - Black EPDM with 316 stainless steel mesh								
10 Mesh *	1/2"	3/4"	1"	1-1/2"	2"	2-1/2"	3"	4"
Price (£)	40.50	40.50	25.00	25.00	27.00	34.00	38.80	57.00
Order Ref	EBK-G-050-20M	EBK-G-075-20M	EBK-G-100-10M	EBK-G-150-10M	EBK-G-200-10M	EBK-G-250-10M	EBK-G-300-10M	EBK-G-400-10M
60 Mesh	1/2"	3/4"	1"	1-1/2"	2"	2-1/2"	3"	4"
Price (£)	40.50	40.50	27.75	27.75	29.70	36.25	41.50	62.25
Order Ref	EBK-G-050-60M	EBK-G-075-60M	EBK-G-100-60M	EBK-G-150-60M	EBK-G-200-60M	EBK-G-250-60M	EBK-G-300-60M	EBK-G-400-60M
100 Mesh	1/2"	3/4"	1"	1-1/2"	2"	2-1/2"	3"	*4"
Price (£)	40.50	40.50	27.75	27.75	29.70	36.25	41.50	69.50
Order Ref	EBK-G-050-100M	EBK-G-075-100M	EBK-G-100-100M	EBK-G-150-100M	EBK-G-200-100M	EBK-G-250-100M	EBK-G-300-100M	EBK-G-400-100M/20M

Viton - Black Viton with 316 stainless steel mesh								
10 Mesh*	1/2"	3/4"	1"	1-1/2"	2"	2-1/2"	3"	4"
Price (£)	41.75	41.75	25.20	25.20	32.30	34.00	40.25	63.65
Order Ref	VBK-G-050-20M	VBK-G-075-20M	VBK-G-100-10M	VBK-G-150-10M	VBK-G-200-10M	VBK-G-250-10M	VBK-G-300-10M	VBK-G-400-10M
60 Mesh	1/2"	3/4"	1"	1-1/2"	2"	2-1/2"	3"	4"
Price (£)	41.75	41.75	27.75	27.75	29.75	36.25	42.75	66.75
Order Ref	VBK-G-050-60M	VBK-G-075-60M	VBK-G-100-60M	VBK-G-150-60M	VBK-G-200-60M	VBK-G-250-60M	VBK-G-300-60M	VBK-G-400-60M
100 Mesh	1/2"	3/4"	1"	1-1/2"	2"	2-1/2"	3"	*4"
Price (£)	41.75	41.75	27.75	27.75	29.75	36.25	42.75	72.50
Order Ref	VBK-G-050-100M	VBK-G-075-100M	VBK-G-100-100M	VBK-G-150-100M	VBK-G-200-100M	VBK-G-250-100M	VBK-G-300-100M	VBK-G-400-100M/20M

Silicone - Clear Platinum Cured Silicone with 316 stainless steel mesh								
10 Mesh*	1/2"	3/4"	1"	1-1/2"	2"	2-1/2"	3"	4"
Price (£)	44.80	44.80	25.20	25.20	27.20	33.60	38.80	58.30
Order Ref	SPT-G-050-20M	SPT-G-075-20M	SPT-G-100-10M	SPT-G-150-10M	SPT-G-200-10M	SPT-G-250-10M	SPT-G-300-10M	SPT-G-400-10M
60 Mesh	1/2"	3/4"	1"	1-1/2"	2"	2-1/2"	3"	4"
Price (£)	44.80	44.80	27.75	27.75	29.75	36.25	41.50	61.00
Order Ref	SPT-G-050-60M	SPT-G-075-60M	SPT-G-100-60M	SPT-G-150-60M	SPT-G-200-60M	SPT-G-250-60M	SPT-G-300-60M	SPT-G-400-60M
100 Mesh	1/2"	3/4"	1"	1-1/2"	2"	2-1/2"	3"	*4"
Price (£)	44.80	44.80	27.75	27.75	29.75	36.25	41.50	69.50
Order Ref	SPT-G-050-100M	SPT-G-075-100M	SPT-G-100-100M	SPT-G-150-100M	SPT-G-200-100M	SPT-G-250-100M	SPT-G-300-100M	SPT-G-400-100M/20M

*Note: Most coarse mesh for 1/2" and 3/4" sizes is 20 mesh. 4" 100 mesh screens have 20 mesh backing.

Perforated Screen Gaskets

Perforated screens are available for use with the plain orifice plate slit gaskets listed on page 5.

0.85mm Perforations - 316 stainless steel							
	1"	1-1/2"	2"	2-1/2"	3"	4"	
Price (£)	14.30	14.30	15.75	20.30	27.60	35.75	
Order Ref	PS-100-085	PS-100-085	PS-200-085	PS-250-085	PS-300-085	PS-400-085	
3mm Perforations - 316 stainless steel							
	1"	1-1/2"	2"	2-1/2"	3"	4"	
Price (£)	22.65	22.65	23.95	27.50	29.95	36.45	
Order Ref	PS-100-3	PS-100-3	PS-200-3	PS-250-3	PS-300-3	PS-400-3	

Sock Screen Gaskets

Sock screen gaskets are available in sizes 1-1/2" to 4" with two lengths of 16 mesh stainless steel screen. Sock screen gaskets are intended for applications where a large debris holding capacity is required. To aid installation and removal Staitech also offer clamp ended spools matched to the two lengths of sock screen gaskets available. Sock screen gasket elastomers are FDA CFR 21 and USP Class VI compliant.



EPDM - Black EPDM with 25 mm long 16 mesh 316 stainless steel screen					
	1-1/2"	2"	2-1/2"	3"	4"
Price (£)	49.75	52.00	53.00	55.00	-
Order Ref	EBK-SOCK-150-16M-25	EBK-SOCK-200-16M-25	EBK-SOCK-250-16M-25	EBK-SOCK-300-16M-25	-
EPDM - Black EPDM with 150 mm long 16 mesh 316 stainless steel screen					
	1-1/2"	2"	2-1/2"	3"	4"
Price (£)	53.00	55.00	56.00	59.00	70.00
Order Ref	EBK-SOCK-150-16M-150	EBK-SOCK-200-16M-150	EBK-SOCK-250-16M-150	EBK-SOCK-300-16M-150	EBK-SOCK-400-16M-150

Viton - Black Viton with 25 mm long 16 mesh 316 stainless steel screen					
	1-1/2"	2"	2-1/2"	3"	4"
Price (£)	49.75	52.00	53.00	55.00	-
Order Ref	VBK-SOCK-150-16M-25	VBK-SOCK-200-16M-25	VBK-SOCK-250-16M-25	VBK-SOCK-300-16M-25	-
Viton - Black Viton with 150 mm long 16 mesh 316 stainless steel screen					
	1-1/2"	2"	2-1/2"	3"	4"
Price (£)	53.00	55.00	56.00	59.00	70.00
Order Ref	VBK-SOCK-150-16M-150	VBK-SOCK-200-16M-150	VBK-SOCK-250-16M-150	VBK-SOCK-300-16M-150	VBK-SOCK-400-16M-150

Silicone - Clear Platinum Cured Silicone with 25 mm long 16 mesh 316 stainless steel screen					
	1-1/2"	2"	2-1/2"	3"	4"
Price (£)	49.75	52.00	53.00	55.00	-
Order Ref	SPT-SOCK-150-16M-25	SPT-SOCK-200-16M-25	SPT-SOCK-250-16M-25	SPT-SOCK-300-16M-25	-
Silicone - Clear Platinum Cured Silicone with 150 mm long 16 mesh 316 stainless steel screen					
	1-1/2"	2"	2-1/2"	3"	4"
Price (£)	53.00	55.00	56.00	59.00	70.00
Order Ref	SPT-SOCK-150-16M-150	SPT-SOCK-200-16M-150	SPT-SOCK-250-16M-150	SPT-SOCK-300-16M-150	SPT-SOCK-400-16M-150

Certification (all screen gasket types) - Individually certified stating batch number - £3.50 per line item

Sock Screen Gasket Spools

Machined Spools - 316L, 0.5 Ra					
	1-1/2"	2"	2-1/2"	3"	
To suit screen length (mm)	25	25	25	25	
Spool length (mm)	29	39	39	39	
Price (£)	28.50	29.00	48.75	55.00	
Order Ref	SOCKSPL-150C-29	SOCKSPL-200C-39	SOCKSPL-250C-39	SOCKSPL-300C-39	
	1-1/2"	2"	2-1/2"	3"	
To suit screen length (mm)	150	150	150	150	
Spool length (mm)	150	150	150	150	
Price (£)	67.75	72.50	88.00	96.00	
Order Ref	SOCKSPL-150C-150	SOCKSPL-200C-150	SOCKSPL-250C-150	SOCKSPL-300C-150	

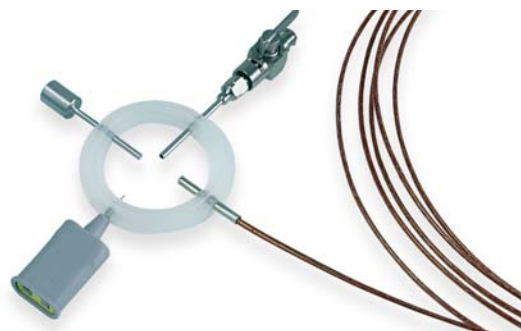
Certification - Material certification - £3.50 per line item

Screen & Sock Screen Gasket Options

- Alternative mesh and perforation sizes
- Removable mesh screen gaskets
- Hastalloy mesh and perforated screens

'Smart Gasket' System

A 'Smart Gasket' takes the place of a standard gasket and allows insertion through its side wall of thermocouple instruments, thermometers and sample devices. A 'Smart' clamp must be used in conjunction with the 'Smart Gasket' system and any of the clamps offered by Staitech can be supplied to suit. All gaskets are FDA CFR 21 and USP Class VI compliant.



EPDM Gasket Only - Black								
1 Port	1/2"	3/4"	1"	1-1/2"	2"	2-1/2"	3"	4"
Price (£)	28.80	29.00	40.00	40.00	42.00	59.00	59.00	80.00
Order Ref	EBK-GS-050-1	EBK-GS-075-1	EBK-GS-100-1	EBK-GS-150-1	EBK-GS-200-1	EBK-GS-250-1	EBK-GS-300-1	EBK-GS-400-1
2 Ports	1/2"	3/4"	1"	1-1/2"	2"	2-1/2"	3"	4"
Price (£)	37.00	37.00	48.00	48.00	51.00	68.00	68.00	88.00
Order Ref	EBK-GS-050-2	EBK-GS-075-2	EBK-GS-100-2	EBK-GS-150-2	EBK-GS-200-2	EBK-GS-250-2	EBK-GS-300-2	EBK-GS-400-2
3 Ports	1/2"	3/4"	1"	1-1/2"	2"	2-1/2"	3"	4"
Price (£)	44.00	44.00	56.00	56.00	58.00	76.00	76.00	96.00
Order Ref	EBK-GS-050-3	EBK-GS-075-3	EBK-GS-100-3	EBK-GS-150-3	EBK-GS-200-3	EBK-GS-250-3	EBK-GS-300-3	EBK-GS-400-3
4 Ports	1/2"	3/4"	1"	1-1/2"	2"	2-1/2"	3"	4"
Price (£)	51.00	51.00	67.00	67.00	69.00	83.00	83.00	104.00
Order Ref	EBK-GS-050-4	EBK-GS-075-4	EBK-GS-100-4	EBK-GS-150-4	EBK-GS-200-4	EBK-GS-250-4	EBK-GS-300-4	EBK-GS-400-4

Silicone Gasket Only - Clear Platinum Cured Silicone								
1 Port	1/2"	3/4"	1"	1-1/2"	2"	2-1/2"	3"	4"
Price (£)	30.00	30.00	42.00	42.00	44.00	59.00	59.00	88.00
Order Ref	SPT-GS-050-1	SPT-GS-075-1	SPT-GS-100-1	SPT-GS-150-1	SPT-GS-200-1	SPT-GS-250-1	SPT-GS-300-1	SPT-GS-400-1
2 Ports	1/2"	3/4"	1"	1-1/2"	2"	2-1/2"	3"	4"
Price (£)	37.00	37.00	49.00	49.00	51.00	69.00	69.00	97.00
Order Ref	SPT-GS-050-2	SPT-GS-075-2	SPT-GS-100-2	SPT-GS-150-2	SPT-GS-200-2	SPT-GS-250-2	SPT-GS-300-2	SPT-GS-400-2
3 Ports	1/2"	3/4"	1"	1-1/2"	2"	2-1/2"	3"	4"
Price (£)	45.00	45.00	56.00	56.00	59.00	77.00	77.00	105.00
Order Ref	SPT-GS-050-3	SPT-GS-075-3	SPT-GS-100-3	SPT-GS-150-3	SPT-GS-200-3	SPT-GS-250-3	SPT-GS-300-3	SPT-GS-400-3
4 Ports	1/2"	3/4"	1"	1-1/2"	2"	2-1/2"	3"	4"
Price (£)	53.00	53.00	64.00	64.00	67.00	85.00	85.00	113.00
Order Ref	SPT-GS-050-4	SPT-GS-075-4	SPT-GS-100-4	SPT-GS-150-4	SPT-GS-200-4	SPT-GS-250-4	SPT-GS-300-4	SPT-GS-400-4

'Smart Gasket' Options		
	Order Ref	Price (£)
Anti-crush ring for use with 1/2" and 3/4" gaskets	ACR	40.50
Sample injection tube	ACC-T-202	56.00
Stop cock valve	ACC-T-202B	138.00
Hole plug	ACC-T-202A	35.00
Type T thermocouple wire - 3m	ACC-TIV-10	190.00
Type K kapton coated wire - 3m	ACC-KV-10	217.00
Type K thermocouple sensor probe (short)	ACC-K-199A-S	96.00
Type K thermocouple sensor probe (long)	ACC-K-199A-L	88.00
Type T thermocouple sensor probe (short)	ACC-T-199-S	86.00
Type T thermocouple sensor probe (long)	ACC-T-199-L	96.00
Hand held single input thermocouple indicator	IND-1	136.00
Hand held dual input thermocouple indicator	IND-2	145.00

Note: 'Smart Gaskets' must be used in conjunction with 'Smart' Clamps - See pages 12 and 13.

Certification - Gaskets individually certified stating batch number and cure date - £3.50 per line item.

Also available

• Viton seal material · Notched ferrules for 1/2" and 3/4" applications

Drilled Gaskets - to accept 1/0.2mm thermocouple wire

Where thermocouple wires are to be used for temperature mapping Staitech also offer standard gaskets cross drilled to allow the insertion of a single 1/0.2 welded tip thermocouple wire. All gaskets are FDA CFR 21 and USP Class VI compliant.



EPDM - Black									
	1/4"	1/2"	3/4"	1"	1-1/2"	2"	2-1/2"	3"	4"
Price (£)	2.80	2.65	2.70	3.00	2.85	3.80	4.10	5.05	5.35
Order Ref	EBK-GTH1-025	EBK-GTH1-050	EBK-GTH1-075	EBK-GTH1-100	EBK-GTH1-150	EBK-GTH1-200	EBK-GTH1-250	EBK-GTH1-300	EBK-GTH1-400
Viton - Black									
	1/4"	1/2"	3/4"	1"	1-1/2"	2"	2-1/2"	3"	4"
Price (£)	-	3.95	4.05	4.35	4.05	5.10	5.95	7.65	9.25
Order Ref	-	VBK-GTH1-050	VBK-GTH1-075	VBK-GTH1-100	VBK-GTH1-150	VBK-GTH1-200	VBK-GTH1-250	VBK-GTH1-300	VBK-GTH1-400
Silicone - Clear Platinum Cured Silicone									
	1/4"	1/2"	3/4"	1"	1-1/2"	2"	2-1/2"	3"	4"
Price (£)	-	3.10	3.20	3.40	4.30	4.10	4.35	5.05	5.35
Order Ref	-	SPT-GTH1-050	SPT-GTH1-075	SPT-GTH1-100	SPT-GTH1-150	SPT-GTH1-200	SPT-GTH1-250	SPT-GTH1-300	SPT-GTH1-400
Silicone - Clear Peroxide Cured Silicone									
	1/4"	1/2"	3/4"	1"	1-1/2"	2"	2-1/2"	3"	4"
Price (£)	2.90	2.85	2.90	3.10	2.95	3.75	3.95	4.65	4.85
Order Ref	SPX-GTH1-025	SPX-GTH1-050	SPX-GTH1-075	SPX-GTH1-100	SPX-GTH1-150	SPX-GTH1-200	SPX-GTH1-250	SPX-GTH1-300	SPX-GTH1-400

Drilled Gasket Options		
	Order Ref	Price (£)
Thermocouple wire - 1/0.2 welded tip PTFE coated wires suitable for operating temperature range of -75°C to 250°C.		
Type K 2m bare ends	TW-K-2M-B	6.50
Type K 5m bare ends	TW-K-5M-B	11.50
Type K 2m with miniature plug	TW-K-2M-P	11.60
Type K 5m with miniature plug	TW-K-5M-P	16.80
Type K wire only - 50m reel	TW-K-50M-R	38.00
Type K miniature plug	PLG-K	3.00
Type K miniature socket	SKT-K	3.15

Certification - Gaskets individually certified stating batch number and cure date - £3.50 per line item

Also available

- Multi-drilled gaskets
- Notched ferrules for 1/2" and 3/4" applications
- Drilled clamps

Clamps

Staitech offer a wide range of hinged and 2-piece stainless steel clamps, all available with a choice of bolting options as illustrated. In addition to standard clamps Staitech also offer a safety clamp design whereby the clamp's bolting mechanism is prevented from opening until fully loosened. A shrouded nut design is also available for use with SH safety clamps which can also be fitted with a padlock to prevent tampering.



SH-Type with open wing nut

S Type - Single pin hinged design with solid wing nut						
	1/2" - 3/4"	1" - 1-1/2"	2"	2-1/2"	3"	4"
Price (£)	6.80	7.90	8.25	9.85	10.55	11.35
Order Ref	CLP-S-050-S	CLP-S-100-S	CLP-S-200-S	CLP-S-250-S	CLP-S-300-S	CLP-S-400-S
S Type - Single pin hinged design with open wing nut						
	1/2" - 3/4"	1" - 1-1/2"	2"	2-1/2"	3"	4"
Price (£)	6.55	7.40	7.75	9.35	10.05	10.85
Order Ref	CLP-S-050-W	CLP-S-100-W	CLP-S-200-W	CLP-S-250-W	CLP-S-300-W	CLP-S-400-W
S Type - Single pin hinged design with hex nut						
	1/2" - 3/4"	1" - 1-1/2"	2"	2-1/2"	3"	4"
Price (£)	6.55	7.40	7.75	9.35	10.05	10.85
Order Ref	CLP-S-050-H	CLP-S-100-H	CLP-S-200-H	CLP-S-250-H	CLP-S-300-H	CLP-S-400-H
SH Type - Double pin hinged design with solid wing nut						
	1/2" - 3/4"	1" - 1-1/2"	2"	2-1/2"	3"	4"
Price (£)	10.85	11.30	16.05	18.05	18.90	21.50
Order Ref	CLP-SH-050-S	CLP-SH-100-S	CLP-SH-200-S	CLP-SH-250-S	CLP-SH-300-S	CLP-SH-400-S
SH Type - Double pin hinged design with open wing nut						
	1/2" - 3/4"	1" - 1-1/2"	2"	2-1/2"	3"	4"
Price (£)	10.60	10.80	15.50	17.55	18.40	21.00
Order Ref	CLP-SH-050-W	CLP-SH-100-W	CLP-SH-200-W	CLP-SH-250-W	CLP-SH-300-W	CLP-SH-400-W
SH Type - Double pin hinged design with hex nut						
	1/2" - 3/4"	1" - 1-1/2"	2"	2-1/2"	3"	4"
Price (£)	10.60	10.80	15.50	17.55	18.40	21.00
Order Ref	CLP-SH-050-H	CLP-SH-100-H	CLP-SH-200-H	CLP-SH-250-H	CLP-SH-300-H	CLP-SH-400-H
SH SAF Safety Type - Double pin hinged design with open wing nut						
	1/2" - 3/4"	1" - 1-1/2"	2"	2-1/2"	3"	4"
Price (£)	11.65	11.90	17.10	19.25	20.20	21.00
Order Ref	CLP-SHSAF-050-W	CLP-SHSAF-100-W	CLP-SHSAF-200-W	CLP-SHSAF-250-W	CLP-SHSAF-300-W	CLP-SHSAF-400-W
SH SAF Safety Type - Double pin hinged design with hex nut						
	1/2" - 3/4"	1" - 1-1/2"	2"	2-1/2"	3"	4"
Price (£)	11.65	11.90	17.10	19.25	20.20	21.00
Order Ref	CLP-SHSAF-050-H	CLP-SHSAF-100-H	CLP-SHSAF-200-H	CLP-SHSAF-250-H	CLP-SHSAF-300-H	CLP-SHSAF-400-H
SH SAF Safety Type - Double pin hinged design with shrouded hex nut and padlock feature						
	1/2" - 3/4"	1" - 1-1/2"	2"	2-1/2"	3"	4"
Price (£)	15.80	16.10	21.25	23.45	24.40	25.10
Order Ref	CLP-SHSAF-050-SHP	CLP-SHSAF-100-SHP	CLP-SHSAF-200-SHP	CLP-SHSAF-250-SHP	CLP-SHSAF-300-SHP	CLP-SHSAF-400-SHP
SH SAF Padlock Options						
					Order Ref	Price (£)
Brass padlock with individual key					PL1	6.90
Brass padlock with individual key and master key					PL2	11.10
Brass padlock with matched keys					PL3	9.30
Master key					PL4	1.80

Clamps



S-Type with solid wing nut



SH-SAF safety type with padlock shroud



SSH 2-piece design with stainless steel nuts



Clamp with tab port and coloured ring nut

SSH 2-piece design with brass nuts						
	1/2" - 3/4"	1" - 1-1/2"	2"	2-1/2"	3"	4"
Price (£)	11.50	15.00	19.50	21.35	24.45	27.30
Order Ref	CLP-SSH-050-BH	CLP-SSH-100-BH	CLP-SSH-200-BH	CLP-SSH-250-BH	CLP-SSH-300-BH	CLP-SSH-400-BH

SSH 2-piece design with stainless steel nuts						
	1/2" - 3/4"	1" - 1-1/2"	2"	2-1/2"	3"	4"
Price (£)	11.50	15.00	19.50	21.35	24.45	27.30
Order Ref	CLP-SSH-050-SH	CLP-SSH-100-SH	CLP-SSH-200-SH	CLP-SSH-250-SH	CLP-SSH-300-SH	CLP-SSH-400-SH

Coloured Wing Nuts

Where differentiation between various process lines is required Staitech offer colour coded open wing nuts for use with 'S', 'SH' and 'SH SAF' type clamps. Standard colours available are red, blue, black, yellow and green. Alternative colours are available on request. For red add suffix '-R' to the standard clamp part number, '-B' for blue, '-BK' for black, '-Y' for yellow and '-GR' for green. Price adder for coloured wing nut - £5.00

Smart & Tabbed Clamps

All styles of clamp are available for use with either the 'Smart Gasket' system or with tabbed orifice plates. To order 'Smart' or 'Tabbed' clamps add the appropriate suffix to the part number of the clamp required.

	Order Ref Suffix	Price (£)
'Smart Gasket' clamp with single port	-SG1	22.50
'Smart Gasket' clamp with two ports	-SG2	25.50
'Smart Gasket' clamp with three ports	-SG3	27.50
'Smart Gasket' clamp with four ports	-SG4	30.00
Tabbed Orifice Plate Gasket clamp	-OP	8.00

Ferrules

Staitech offer standard ferrules in both 316L material and low sulphur 316L material complying with ASME BPE criteria. All ferrules are finished to the SFF1 BPE surface finish designation of 0.5 microns Ra. Standard ferrules are 28mm long, with BPE ferrules in accordance with the lengths stipulated in the ASME standard. Where smaller components than the tubing size are to be used reducing ferrules are available with various tube/clamp size combinations offered.



Standard Ferrules

316L, 0.5 Ra, 28 mm long									
Clamp size	1/4"	1/2"	3/4"	1"	1-1/2"	2"	2-1/2"	3"	4"
Price (£)	8.50	6.50	6.50	7.50	7.90	9.50	13.50	16.50	22.50
Order Ref	FER-025C-28	FER-050C-28	FER-075C-28	FER-100C-28	FER-150C-28	FER-200C-28	FER-250C-28	FER-300C-28	FER-400C-28
316L BPE, 0.5 Ra									
Clamp size	1/4"	1/2"	3/4"	1"	1-1/2"	2"	2-1/2"	3"	4"
Length (mm)	-	44.5	44.5	44.5	44.5	57.2	57.2	57.2	57.2
Price (£)	-	9.95	9.60	13.10	12.85	17.10	26.15	32.00	47.80
Order Ref	-	FER-050C-BPE	FER-075C-BPE	FER-100C-BPE	FER-150C-BPE	FER-200C-BPE	FER-250C-BPE	FER-300C-BPE	FER-400C-BPE

Reducing Ferrules

316L, 0.5 Ra					
Tube Size	3/4"	1"	1"	1-1/2"	1-1/2"
Clamp Size	1/2"	3/4"	1/2"	1"	3/4"
Length (mm)	28	44.5	44.5	44.5	44.5
Price (£)	18.50	27.00	27.00	26.00	28.00
Order Ref	RFER-075W-050C	RFER-100W-075C	RFER-100W-050C	RFER-150W-100C	RFER-150W-075C
Tube Size	1-1/2"	2"	2"	2"	2"
Clamp Size	1/2"	1-1/2"	1"	3/4"	1/2"
Length (mm)	44.5	50	50	50	50
Price (£)	28.00	35.00	35.00	49.00	49.00
Order Ref	RFER-150W-050C	RFER-200W-150C	RFER-200W-100C	RFER-200W-075C	RFER-200W-050C

Thick Wall Ferrules

Thick wall ferrules are intended for use in tank and vessel fabrications. Manufactured in 316L stainless steel, all surfaces have a finish of 0.5 microns Ra



316L, 0.5 Ra								
Clamp Size	1/2"	3/4"	1"	1-1/2"	2"	2-1/2"	3"	4"
O.D (mm)	17	23	34	47	60	72	85	110
Length (mm)	50	50	70	70	90	90	90	90
Price (£)	31.00	24.50	38.00	43.00	58.00	68.00	83.00	107.00
Order Ref	TWFER-050C	TWFER-075C	TWFER-100C	TWFER-150C	TWFER-200C	TWFER-250C	TWFER-300C	TWFER-400C

Pipe Adaptor Ferrules

Pipe adaptor ferrules allow standard clamped components to be used in piping systems. All sizes are manufactured in 316L stainless steel with wetted surfaces finished to 0.8 microns Ra.



316L, 0.8 Ra			Schedule 40 Pipe		Schedule 10 Pipe	
Pipe Size	Clamp Size	Length (mm)	Order Ref	Order Ref	Order Ref	Price (£)
1/2"	1/2"	25	PFER-050S40-050C	PFER-050S10-050C		18.50
1/2"	3/4"	25	PFER-050S40-075C	PFER-050S10-075C		18.50
3/4"	1/2"	25	PFER-075S40-050C	PFER-075S10-050C		21.50
3/4"	3/4"	25	PFER-075S40-075C	PFER-075S10-075C		21.50
3/4"	1"	25	PFER-075S40-100C	PFER-075S10-100C		18.50
1"	3/4"	28	PFER-100S40-075C	PFER-100S10-075C		22.50
1"	1"	25	PFER-100S40-100C	PFER-100S10-100C		18.50
1"	1-1/2"	25	PFER-100S40-150C	PFER-100S10-150C		22.50
1-1/4"	1"	28	PFER-125S40-100C	PFER-125S10-100C		21.50
1-1/2"	1"	28	PFER-150S40-100C	PFER-150S10-100C		21.50
1-1/4"	1-1/2"	28	PFER-125S40-150C	PFER-125S10-150C		23.50
1-1/2"	1-1/2"	28	PFER-150S40-150C	PFER-150S10-150C		23.50
2"	2"	28	PFER-200S40-200C	PFER-200S10-200C		32.00

Instrument Ferrules

Instrument ferrules offer a simple alternative to instrument Tee's allowing diaphragm seal instruments to be used in small bore piping systems. The face of the clamp fitting is tapered to meet the tube bore thus allowing the instrument diaphragm to move freely. All sizes are manufactured in 316L stainless steel and have a surface finish of 0.5 microns Ra.



316L, 0.5 Ra					
Clamp Size	3/4"	1"	1"	1-1/2"	1-1/2"
Tube O.D	1/2"	1/2"	3/4"	1"	3/4"
Length (mm)	28	35	35	35	35
Price (£)	12.00	22.50	21.00	18.50	23.00
Order Ref	IFER-050W-075C	IFER-050W-100C	IFER-075W-100C	IFER-100W-150C	IFER-075W-150C
Clamp Size	1-1/2"	2"	2"	2"	2"
Tube O.D	1/2"	1 1/2"	1"	3/4"	1/2"
Length (mm)	35	35	35	35	35
Price (£)	24.50	25.00	25.00	29.00	33.00
Order Ref	IFER-050W-150C	IFER-150W-200C	IFER-100W-200C	IFER-075W-200C	IFER-050W-200C

Pipe-to-Tube Socket Weld Adaptors

Where socket weld products are to be used in tubing systems Pipe-to-Tube socket weld adaptors also available. Adaptors fit in to a socket weld fitting, with an inner counter bore matching the OD of the mating tube. Fittings are machined from 316L stainless steel.



316L, 0.8 Ra						
Pipe Socket Weld Size	1/4"	3/8"	1/2"	1/2"	3/4"	1"
Tube Size	1/2"	1/2"	1/2"	3/4"	3/4"	1"
Price (£)	8.50	8.50	9.50	9.50	10.80	13.25
Order Ref	ADP-025SW-050W	ADP-0375SW-050W	ADP-050SW-050W	ADP-050SW-075W	ADP-075SW-075W	ADP-100SW-100W

Pipe-to-Tube Adaptors

Pipe-to-Tube butt weld adaptors allow standard tubing components to be used in piping systems with a smooth transition between the pipe bore and tube I.D. Machined from 316L stainless steel with wetted surfaces finished to 0.5 microns Ra.



316L, 0.5 Ra			Schedule 40 Pipe	Schedule 10 Pipe	
Pipe Size	Tube Size	Length (mm)	Order Ref	Order Ref	Price (£)
1/2"	1/2"	30	CRED-050S40-050W	CRED-050S10-050W	17.00
1/2"	3/4"	30	CRED-050S40-075W	CRED-050S10-075W	18.80
3/4"	1/2"	30	CRED-075S40-050W	CRED-075S10-050W	18.80
3/4"	3/4"	30	CRED-075S40-075W	CRED-075S10-075W	18.80
3/4"	1"	30	CRED-075S40-100W	CRED-075S10-100W	26.00
1"	1"	30	CRED-100S40-100W	CRED-100S10-100W	26.00
1-1/4"	1-1/2"	30	CRED-125S40-150W	CRED-125S10-150W	35.00
1-1/2"	1-1/2"	30	CRED-150S40-150W	CRED-150S10-150W	35.00
2"	2"	30	CRED-200S40-200W	CRED-200S10-200W	42.00

Tank Weld Fittings

Tank weld fittings allow the flush mounting of valves, sight glasses, gauges and other instrumentation on vessels and tanks. Fittings are available to mount clamp product from 1/2" to 4" in thicknesses to suit individual fabrication requirements. Fittings are manufactured in 316L stainless steel with wetted surfaces finished to 0.5 microns Ra.



15 mm thick weld pad, 316L, 0.5 Ra			17 mm thick				20 mm thick	
Clamp Size	1/2"	3/4"	1"	1-1/2"	2"	2-1/2"	3"	4"
Price (£)	106.00	106.00	148.00	148.00	170.00	191.00	342.00	490.00
Order Ref	TWF-050C-15	TWF-075C-15	TWF-100C-17	TWF-150C-17	TWF-200C-17	TWF-250C-17	TWF-300C-20	TWF-400C-20
25 mm thick weld pad, 316L, 0.5 Ra			17 mm thick				20 mm thick	
Clamp Size	1/2"	3/4"	1"	1-1/2"	2"	2-1/2"	3"	4"
Price (£)	132.00	132.00	164.00	164.00	192.00	220.00	395.00	574.00
Order Ref	TWF-050C-25	TWF-075C-25	TWF-100C-25	TWF-150C-25	TWF-200C-25	TWF-250C-25	TWF-300C-25	TWF-400C-25
38 mm thick weld pad, 316L, 0.5 Ra			17 mm thick				20 mm thick	
Clamp Size	1/2"	3/4"	1"	1-1/2"	2"	2-1/2"	3"	4"
Price (£)	126.00	126.00	188.00	188.00	220.00	252.00	454.00	660.00
Order Ref	TWF-050C-38	TWF-075C-38	TWF-100C-38	TWF-150C-38	TWF-200C-38	TWF-250C-38	TWF-300C-38	TWF-400C-38
51 mm thick weld pad, 316L, 0.5 Ra			17 mm thick				20 mm thick	
Clamp Size	1/2"	3/4"	1"	1-1/2"	2"	2-1/2"	3"	4"
Price (£)	145.00	145.00	216.00	216.00	252.00	290.00	522.00	758.00
Order Ref	TWF-050C-51	TWF-075C-51	TWF-100C-51	TWF-150C-51	TWF-200C-51	TWF-250C-51	TWF-300C-51	TWF-400C-51

Threaded Adaptors

Where a threaded product is to be coupled with a clamp fitting Staitech offer a range of stainless steel BSP-to-Clamp adaptors. Female fittings use a parallel thread with internal Gylon face seal while male fittings use a taper thread. Standard fittings have an internal finish of 0.8 microns Ra.



BSP-to-Clamp Adaptors

316L, 0.8 Ra		Male Thread		Female Thread	
Thread Size	Clamp Size	Order Ref	Price (£)	Order Ref	Price (£)
1/8"	1/2"	ADP-0125GM-050C	18.50	ADP-0125GF-050C	19.50
1/4"	1/2"	ADP-025GM-050C	18.50	ADP-025GF-050C	19.50
3/8"	1/2"	ADP-0375GM-050C	20.50	ADP-0375GF-050C	21.50
1/2"	1/2"	ADP-050GM-050C	22.50	ADP-050GF-050C	23.50
3/4"	1/2"	ADP-075GM-050C	26.00	ADP-075GF-050C	28.00
1/4"	3/4"	ADP-025GM-075C	18.50	ADP-025GF-075C	19.50
3/8"	3/4"	ADP-0375GM-075C	20.50	ADP-0375GF-075C	23.50
1/2"	3/4"	ADP-050GM-075C	22.50	ADP-050GF-075C	28.00
3/4"	3/4"	ADP-075GM-075C	26.00	ADP-075GF-075C	29.00
1/4"	1"	ADP-025GM-100C	28.00	ADP-025GF-100C	29.00
3/8"	1"	ADP-0375GM-100C	28.00	ADP-0375GF-100C	29.00
1/2"	1"	ADP-050GM-100C	28.00	ADP-050GF-100C	29.00
3/4"	1"	ADP-075GM-100C	28.00	ADP-075GF-100C	29.00
1"	1"	ADP-100GM-100C	28.00	ADP-100GF-100C	29.00
1/4"	1-1/2"	ADP-025GM-150C	28.00	ADP-025GF-150C	29.00
3/8"	1-1/2"	ADP-0375GM-150C	28.00	ADP-0375GF-150C	29.00
1/2"	1-1/2"	ADP-050GM-150C	28.00	ADP-050GF-150C	29.00
3/4"	1-1/2"	ADP-075GM-150C	28.00	ADP-075GF-150C	29.00
1"	1-1/2"	ADP-100GM-150C	28.00	ADP-100GF-150C	29.00
1/2"	2"	ADP-050GM-200C	36.00	ADP-050GF-200C	38.00
3/4"	2"	ADP-075GM-200C	36.00	ADP-075GF-200C	38.00
1"	2"	ADP-100GM-200C	36.00	ADP-100GF-200C	38.00
1-1/2"	2"	ADP-150GM-200C	36.00	ADP-150GF-200C	38.00
2"	2"	ADP-200GM-200C	48.00	ADP-200GF-200C	52.00

BSP-to-Tube Adaptors

Tube-to-threaded adaptors are manufactured in 316L stainless steel material and have a 28mm long weld shoulder. Standard fittings have an internal finish of 0.8 microns Ra.

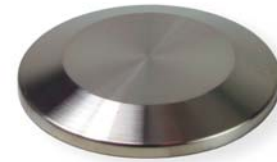


316L, 0.8 Ra		Male Thread		Female Thread	
Thread Size	Tube Size	Order Ref	Price (£)	Order Ref	Price (£)
1/4"	1/2"	ADP-025GM-050W	16.50	ADP-025GF-050W	14.00
1/4"	3/4"	ADP-025GM-075W	18.00	ADP-025GF-075W	16.00
1/2"	1"	ADP-050GM-100W	22.50	ADP-050GF-100W	18.00

• Other sizes available

Blank Caps

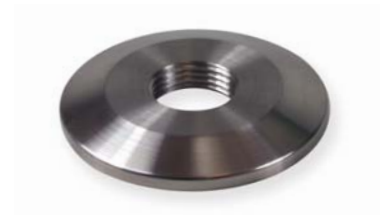
Blank caps are manufactured in 316L stainless steel with the wetted face finished to 0.5 microns Ra.



316L, 0.5 Ra						
Clamp Size	1/2" - 3/4"	1" - 1-1/2"	2"	2-1/2"	3"	4"
Price (£)	5.55	5.85	8.65	11.25	14.20	24.00
Order Ref	CAP-050C	CAP-100C	CAP-200C	CAP-250C	CAP-300C	CAP-400C

Threaded Blank Caps

Where blank caps are to be fitted with a thermocouple or other similar device they can be supplied with a BSP female threaded port. A range of compression fittings to suit are also available from Staitech.



316L, 0.5 Ra						
Clamp Size	1/2" - 3/4"	1" - 1-1/2"	2"	2-1/2"	3"	4"
Thread Size	1/8"	1/8"	1/8"	1/8"	1/8"	1/8"
Price (£)	14.90	15.20	18.00	21.10	24.05	33.35
Order Ref	CAP-050C-0125GF	CAP-100C-0125GF	CAP-200C-0125GF	CAP-250C-0125GF	CAP-300C-0125GF	CAP-400C-0125GF
Thread Size	1/4"	1/4"	1/4"	1/4"	1/4"	1/4"
Price (£)	14.90	15.20	18.00	21.10	24.05	33.35
Order Ref	CAP-050C-025GF	CAP-100C-025GF	CAP-200C-025GF	CAP-250C-025GF	CAP-300C-025GF	CAP-400C-025GF
Thread Size	3/8"	3/8"	3/8"	3/8"	3/8"	3/8"
Price (£)	-	15.20	18.00	21.10	24.05	33.35
Order Ref	-	CAP-100C-0375GF	CAP-200C-0375GF	CAP-250C-0375GF	CAP-300C-0375GF	CAP-400C-0375GF

Also available

- Multiple Ports

Pull-Tab Blank Caps

Pull-Tab blank caps are also available which allow easy removal and holding. Larger sizes incorporate a lever port feature which allow caps to be prised without fear of damaging the sealing face or gasket.



316L, 0.5 Ra						
Clamp Size	1/2" - 3/4"	1" - 1-1/2"	2"	2-1/2"	3"	4"
Price (£)	14.50	25.50	35.50	47.00	62.00	78.00
Order Ref	PTCAP-050C	PTCAP-100C	PTCAP-200C	PTCAP-250C	PTCAP-300C	PTCAP-400C

Hose Adaptors

Hose adaptors are available in a wide range of clamp and barb sizes. The clamping face on all sizes is tapered to match the barb bore ensuring complete drainability. Hose adaptors are manufactured in 316L stainless steel with wetted surfaces finished to 0.5 microns Ra.



316L, 0.5 Ra				
Clamp Size	1/4"	1/2"	1/2"	1/2"
Barb O.D. (mm)	6.5	6.5	9.6	12.8
Barb I.D. (mm)	4.5	4.5	8.0	9.5
Length (mm)	30	30	30	40
Price (£)	21.50	21.50	21.50	21.50
Order Ref	HOSEB-025C-6.5B	HOSEB-050C-6.5B	HOSEB-050C-9.6B	HOSEB-050C-12.8B
Clamp Size	3/4"	3/4"	3/4"	3/4"
Barb O.D. (mm)	6.5	9.6	12.8	19.2
Barb I.D. (mm)	4.5	8.0	9.5	15.8
Length (mm)	30	30	40	40
Price (£)	21.50	21.50	21.50	17.00
Order Ref	HOSEB-075C-6.5B	HOSEB-075C-9.6B	HOSEB-075C-12.8B	HOSEB-075C-19.2B
Clamp Size	1"	1"	1"	1"
Barb O.D. (mm)	6.5	9.6	12.8	19.2
Barb I.D. (mm)	4.5	8.0	9.5	15.8
Length (mm)	30	30	40	40
Price (£)	31.50	31.50	32.50	25.00
Order Ref	HOSEB-100C-6.5B	HOSEB-100C-9.6B	HOSEB-100C-12.8B	HOSEB-100C-19.2B
Clamp Size	1"	1-1/2"	1-1/2"	1-1/2"
Barb O.D. (mm)	25.6	6.5	9.6	12.8
Barb I.D. (mm)	22.2	4.5	8.0	9.5
Length (mm)	40	30	30	40
Price (£)	25.00	31.50	31.50	32.50
Order Ref	HOSEB-100C-25.6B	HOSEB-150C-6.5B	HOSEB-150C-9.6B	HOSEB-150C-12.8B
Clamp Size	1-1/2"	1-1/2"	2"	2"
Barb O.D. (mm)	19.2	25.6	6.5	9.6
Barb I.D. (mm)	15.8	22.2	4.5	8.0
Length (mm)	40	40	30	30
Price (£)	25.00	25.00	34.00	34.00
Order Ref	HOSEB-150C-19.2B	HOSEB-150C-25.6B	HOSEB-200C-6.5B	HOSEB-200C-9.6B
Clamp Size	2"	2"	2"	-
Barb O.D. (mm)	12.8	19.2	25.6	-
Barb I.D. (mm)	9.6	15.8	22.2	-
Length (mm)	40	45	50	-
Price (£)	36.00	28.65	30.50	-
Order Ref	HOSEB-200C-12.8B	HOSEB-200C-19.2B	HOSEB-200C-25.6B	-

Also available

- Eccentric adaptors
- Double ended adaptors

Reducers

Concentric and eccentric reducers have a tapered bore to ensure a smooth transition between tube sizes. Reducers are manufactured in 316L stainless steel with wetted surfaces finished to 0.5 microns Ra. Whilst most sizes are machined from bar stock, larger sizes of eccentric reducer are fabricated in accordance with the ASME BPE standard.



Concentric Reducers

Machined Reducers 316L, 0.5 Ra					
Side 1	3/4"	1"	1"	1-1/2"	1-1/2"
Side 2	1/2"	1/2"	3/4"	1/2"	3/4"
Length (mm)	40	40	40	40	40
Price (£)	25.00	40.50	40.50	42.50	42.50
Order Ref	CREDM-075C-050C	CREDM-100C-050C	CREDM-100C-075C	CREDM-150C-050C	CREDM-150C-075C
Side 1	1-1/2"	2"	2"	2"	2"
Side 2	1"	1/2"	3/4"	1"	1-1/2"
Length (mm)	40	60	60	45	45
Price (£)	38.00	75.00	75.00	68.00	68.00
Order Ref	CREDM-150C-100C	CREDM-200C-050C	CREDM-200C-075C	CREDM-200C-100C	CREDM-200C-150C
Side 1	2-1/2"	2-1/2"	2-1/2"	2-1/2"	2-1/2"
Side 2	1/2"	3/4"	1"	1-1/2"	2"
Length (mm)	60	60	55	55	55
Price (£)	92.00	92.00	77.00	77.00	77.00
Order Ref	CREDM-250C-050C	CREDM-250C-075C	CREDM-250C-100C	CREDM-250C-150C	CREDM-250C-200C
Side 1	3"	3"	3"	3"	-
Side 2	1"	1-1/2"	2"	2-1/2"	-
Length (mm)	60	60	60	60	-
Price (£)	96.00	96.00	96.00	96.00	-
Order Ref	CREDM-300C-100C	CREDM-300C-150C	CREDM-300C-200C	CREDM-300C-250C	-

Eccentric Reducers

Machined Reducers 316L, 0.5 Ra					
Side 1	3/4"	1"	1"	1-1/2"	1-1/2"
Side 2	1/2"	1/2"	3/4"	1/2"	3/4"
Length (mm)	40	40	40	40	40
Price (£)	43.00	85.00	78.00	92.00	85.00
Order Ref	EREDM-075C-050C	EREDM-100C-050C	EREDM-100C-075C	EREDM-150C-050C	EREDM-150C-075C
Side 1	1-1/2"	2"	2"	2"	2"
Side 2	1"	1/2"	3/4"	1"	1-1/2"
Length (mm)	40	50	50	50	50
Price (£)	72.00	102.00	102.00	98.00	94.00
Order Ref	EREDM-150C-100C	EREDM-200C-050C	EREDM-200C-075	EREDM-200C-100C	EREDM-200C-150C
Fabricated Reducers 316L BPE, 0.5 Ra					
Side 1	2-1/2"	2-1/2"	2-1/2"	2-1/2"	2-1/2"
Side 2	1/2"	3/4"	1"	1-1/2"	2"
Length (mm)	190	190	127	178	178
Price (£)	153.00	153.00	120.00	120.00	95.00
Order Ref	EREDF-250C-050C-BPE	EREDF-250C-075C-BPE	EREDF-250C-100C-BPE	EREDF-250C-150C-BPE	EREDF-250C-200C-BPE
Side 1	3"	3"	3"	3"	-
Side 2	1"	1-1/2"	2"	2-1/2"	-
Length (mm)	229	178	127	76	-
Price (£)	110.00	110.00	142.50	96.00	-
Order Ref	EREDF-300C-100C-BPE	EREDF-300C-150C-BPE	EREDF-300C-200C-BPE	EREDF-300C-250C-BPE	-

Elbows

45 and 90° elbows are manufactured in accordance with ASME BPE in 316L stainless steel material. Standard elbows have clamp ends and are finished to the SFFI BPE surface finish designation of 0.5 microns Ra.



45° - 316L BPE, 0.5 Ra				
Clamp Size	1/2"	3/4"	1"	1-1/2"
Price (£)	44.40	44.40	35.00	36.20
Order Ref	E45-050CC-BPE	E45-075CC-BPE	E45-100CC-BPE	E45-150CC-BPE
Clamp Size	2"	2-1/2"	3"	4"
Price (£)	48.90	52.70	88.00	124.00
Order Ref	E45-200CC-BPE	E45-250CC-BPE	E45-300CC-BPE	E45-400CC-BPE
90° - 316L BPE, 0.5 Ra				
Clamp Size	1/2"	3/4"	1"	1-1/2"
Price (£)	42.15	46.80	36.50	41.00
Order Ref	E90-050CC-BPE	E90-075CC-BPE	E90-100CC-BPE	E90-150CC-BPE
Clamp Size	2"	2-1/2"	3"	4"
Price (£)	53.00	63.00	117.00	148.00
Order Ref	E90-200CC-BPE	E90-250CC-BPE	E90-300CC-BPE	E90-400CC-BPE

Low Profile Elbows

For applications where height is restricted, Staitech offer a range of low profile elbows. Designed primarily for steam trap installations, fittings are available with either weld or clamp branch connection. Manufactured in 316L stainless steel with wetted surfaces finished to 0.5 microns Ra.



Clamp branch fitting - 316L, 0.5 Ra			
Outlet Clamp Size	1/2"	3/4"	1"
Price (£)	85.00	93.00	102.00
Order Ref	LPE90-050C-050C	LPE90-075C-075C	LPE90-100C-100C
Weld branch fitting - 316L, 0.5 Ra			
Outlet Clamp Size	1/2"	3/4"	1"
Price (£)	81.50	88.50	98.00
Order Ref	LPE90-050W-050C	LPE90-075W-075C	LPE90-100W-100C

Tees

Equal and short outlet Tees are manufactured in accordance with ASME BPE in 316L stainless steel material. Standard Tees have clamp ends and an internal finish of 0.5 microns Ra.



Equal Tees - 316L BPE, 0.5 Ra								
Clamp Size	1/2"	3/4"	1"	1-1/2"	2"	2-1/2"	3"	4"
Price (£)	54.70	68.00	58.25	63.75	79.00	135.00	155.00	280.00
Order Ref	TE-050CCC-BPE	TE-075CCC-BPE	TE-100CCC-BPE	TE-150CCC-BPE	TE-200CCC-BPE	TE-250CCC-BPE	TE-300CCC-BPE	TE-400CCC-BPE
Short Outlet Equal Tees - 316L BPE, 0.5 Ra								
Clamp Size	1/2"	3/4"	1"	1-1/2"	2"	2-1/2"	3"	4"
Price (£)	60.75	67.50	71.90	74.90	89.50	110.50	155.00	245.00
Order Ref	TS-050CCC-BPE	TS-075CCC-BPE	TS-100CCC-BPE	TS-150CCC-BPE	TS-200CCC-BPE	TS-250CCC-BPE	TS-300CCC-BPE	TS-400CCC-BPE

Reducing Tees

Where a reduction in branch size is required, equal and short outlet reducing Tees are also available. As with the equal Tee range, reducing Tees are manufactured in accordance with ASME BPE in 316L stainless steel material. Standard Tees have clamp ends and an internal finish of 0.5 microns Ra.



Equal Reducing Tees - 316L BPE, 0.5 Ra					
Leg Size	3/4"	1"	1"	1-1/2"	1-1/2"
Branch Size	1/2"	3/4"	1/2"	1"	3/4"
Price (£)	78.50	95.00	95.00	86.00	96.00
Order Ref	RTE-075C-050C-BPE	RTE-100C-075C-BPE	RTE-100C-050C-BPE	RTE-150C-100C-BPE	RTE-150C-075C-BPE
Leg Size	1-1/2"	2"	2"	2"	2"
Branch Size	1/2"	1-1/2"	1"	3/4"	1/2"
Price (£)	98.00	98.00	97.00	124.00	124.00
Order Ref	RTE-150C-050C-BPE	RTE-200C-150C-BPE	RTE-200C-100C-BPE	RTE-200C-075C-BPE	RTE-200C-050C-BPE
Short Outlet Reducing Tees - 316L BPE, 0.5 Ra					
Leg Size	3/4"	1"	1"	1-1/2"	1-1/2"
Branch Size	1/2"	3/4"	1/2"	1"	3/4"
Price (£)	84.50	107.00	107.00	97.00	107.00
Order Ref	RTS-075C-050C-BPE	RTS-100C-075C-BPE	RTS-100C-050C-BPE	RTS-150C-100C-BPE	RTS-150C-075C-BPE
Leg Size	1-1/2"	2"	2"	2"	2"
Branch Size	1/2"	1-1/2"	1"	3/4"	1/2"
Price (£)	109.00	108.00	107.00	134.00	134.00
Order Ref	RTS-150C-050C-BPE	RTS-200C-150C-BPE	RTS-200C-100C-BPE	RTS-200C-075C-BPE	RTS-200C-050C-BPE

Instrument Tees

Instrument Tees are designed to allow the installation of pressure gauges and other similar instruments without introducing a dead-leg. Manufactured in 316L stainless steel, instrument tees are available with either clamp or weld ends. Wetted surfaces are finished to 0.5 microns Ra.



Clamp Ends - 316L BPE, 0.5 Ra				
Leg Size	1/2"	1/2"	3/4"	3/4"
Instrument Port	1-1/2"	2"	1-1/2"	2"
Price (£)	125.00	139.00	125.00	141.00
Order Ref	INST-050C-150C	INST-050C-200C	INST-075C-150C	INST-075C-200C
Leg Size	1"	1"	1-1/2"	1-1/2"
Instrument Port	1-1/2"	2"	1-1/2"	2"
Price (£)	123.00	145.00	62.25	165.00
Order Ref	INST-100C-150C	INST-100C-200C	RTS-150C-150C*	INST-150C-200C
Weld Ends - 316L BPE, 0.5 Ra				
Leg Size	1/2"	1/2"	3/4"	3/4"
Instrument Port	1-1/2"	2"	1-1/2"	2"
Price (£)	116.00	131.25	115.00	133.00
Order Ref	INST-050W-150C	INST-050W-200C	INST-075W-150C	INST-075W-200C
Leg Size	1"	1"	1-1/2"	1-1/2"
Instrument Port	1-1/2"	2"	1-1/2"	2"
Price (£)	110.00	135.50	62.25	157.00
Order Ref	INST-100W-150C	INST-100W-200C	RTS-150W-150C*	INST-150W-200C

*1-1/2" x 1-1/2" Tee is a short outlet Tee.

Crosses

Equal crosses are manufactured in accordance with ASME BPE in 316L stainless steel material. Standard crosses have clamp ends and are finished to the SFFI BPE surface finish designation of 0.5 microns Ra.



316L BPE, 0.5 Ra				
Clamp Size	1/2"	3/4"	1"	1-1/2"
Price (£)	223.00	235.00	151.00	157.00
Order Ref	C-050CCCC-BPE	C-075CCCC-BPE	C-100CCCC-BPE	C-150CCCC-BPE
Clamp Size	2"	2-1/2"	3"	4"
Price (£)	168.00	364.00	375.00	516.00
Order Ref	C-200CCCC-BPE	C-250CCCC-BPE	C-300CCCC-BPE	C-400CCCC-BPE

Sample Valves

The HSV20 and HSV30 valves are designed for sampling water and process fluids. The HSV20 is offered with both flat face clamp system connection and with optional sample insertion tube. The HSV20 has either a 6% Luer or 6.5mm hose barb sample outlet fitting. Where an angled configuration is required the HSV30 is available. The HSV30 has a 6.5mm hose barb outlet connection. Both valves are manufactured in 316L stainless steel with TFM plug seal and Viton or EPDM stem seal. Wetted surfaces are electropolished(ep) as standard.



HSV20

316L, TFM PTFE stem plug, Viton* stem seal, 0.4 Ra, ep		Hose Barb Fitting		6% Luer Fitting	
Clamp Size	Length (mm)	Order Ref	Price (£)	Order Ref	Price (£)
1/2" - 3/4"	30	HSV20-050CI-H-TV	252.00	HSV20-050CI-L-TV	244.00
1/2" - 3/4"	Flat Face	HSV20-050CF-H-TV	222.00	HSV20-050CF-L-TV	214.00
1" - 1-1/2"	30	HSV20-100CI-H-TV	260.00	HSV20-100CI-L-TV	252.00
1" - 1-1/2"	Flat Face	HSV20-100CF-H-TV	233.00	HSV20-100CF-L-TV	225.00
2"	30	HSV20-200CI-H-TV	277.00	HSV20-200CI-L-TV	266.00
2"	Flat Face	HSV20-200CF-H-TV	244.00	HSV20-200CF-L-TV	236.00

*For EPDM stem seal substitute '-TV' in Order Ref for '-TE'

HSV30

316L, TFM PTFE stem plug, Viton* stem seal, 6.5 mm hose barb outlet, 0.4 Ra, ep			
Clamp Size	1/2" - 3/4"	1" - 1-1/2"	2"
Price (£)	222.00	233.00	244.00
Order Ref	HSV30-050C-TV	HSV30-100C-TV	HSV30-200C-TV

*For EPDM stem seal substitute '-TV' in Order Ref for '-TE'

HSV90

The HSV90 range is suitable for autoclaving. Manufactured in 316L stainless steel with Viton body and Stem O-rings, the Polyetherimide handle enables the valve to be steam sterilised in a standard autoclave. Where steam sampling is to be carried out then a version with Perlast steam resilient seals is available – see HSV60 in sample cooler accessories.



316L, Viton stem and seat seals, 0.5 Ra, ep		6.5mm hose barb outlet		1/2" BPE clamp outlet	
Clamp Size	Order Ref.	Price (£)	Order Ref.	Price (£)	Order Ref.
1/2" - 3/4"	HSV90-050C-H-V	278.00	HSV90-050C-050C-V	298.00	HSV90-050C-050C-V
1" - 1-1/2"	HSV90-100C-H-V	292.00	HSV90-100C-050C-V	312.00	HSV90-100C-050C-V
1" Eccentric	HSV90E-100C-H-V	340.00	HSV90E-100C-025C-V	350.00	HSV90E-100C-025C-V

Sample Coolers

Three models of sample cooler are available from Staitech. The HSC30 is a portable unit designed to allow steam and water samples to be taken easily and safely at multiple points within a facility. The HSC50 and HSC60 units are intended for fixed installations, with the HSC50 having a removable coil. All units are manufactured in 316L stainless steel, with the internal coil produced from electropolished pharmaceutical grade tube. Wetted surfaces are finished to 0.5 microns Ra.



HSC30

316L, 1/2" clamp sample connections, 3/4" clamp cooling water connections			
	Standard Legs	Extended Legs	Extended Legs with Floor Pads
Price (£)	1,430.00	1,502.00	1,700.00
Order Ref	HSC30-050C-075C-SL	HSC30-050C-075C-EL	HSC30-050C-075C-EL-FP

HSC50 & HSC60

316L, 1/2" clamp sample connections	HSC50	HSC60	HSC60
Cooling water connections	3/4" Clamp	1/2" BSP	1/2" Clamp
Price (£)	1,150.00	1,065.00	1,187.00
Order Ref	HSC50-050C-075C	HSC60-050C-050GF	HSC60-050C-050C

Ancillary Products

Staitech offer a comprehensive range of ancillary products for use with all models of sample cooler, including:

- HSV60 steam rated sample valve
- PTFE lined sample hose
- Cooling water adaptor kits
- Steam and water isolation valves
- Hose adaptor kits



Sample Coolers Accessories	Order Ref	Price (£)
HSV60 Sample valve	HSV60-050C-050C	293.00
HSV60 Sample valve kit - HSV60, PTFE seal and 'S' type clamp	HSV60-KIT-050C-050C	308.00
Sample outlet hose adaptor - 1/2" clamp x 8.5 hose tail	HSC-HOSE	34.00
Sample outlet hose adaptor kit - 1/2" clamp x 8.5 hose tail, EPDM seal and 'S' type clamp	HSC-HOSE-KIT	49.00
2m PTFE lined braided stainless steel hose with silicone cover and 1/2" clamp end fittings	HOSE-PL-2M	175.00
Adder cost per meter where 'X' is the new length	HOSE-PL-XM	28.00/m
2m PVC reinforced cooling water hose with 3/4" clamp end fittings	HOSE-PVC-2M	175.00
Adder cost per meter where 'X' is the new length	HOSE-PVC-XM	18.00/m
HSC30 storage/carry case	HSC30-CASE	290.00
HSC60 wall mounting kit	HSC60-WMKIT	95.00

Threaded Pressure Gauges

Staitech offer a range of fully stainless steel pressure gauges in both DN63 and DN100 dial sizes. All gauges have a toughened glass lens and can be supplied with dry case or with liquid damping fill. Standard gauges are bottom entry with male thread. Case fill fluids are FDA compliant.



DN63 Dry - 63mm diameter dial, dry case, 200°C medium temperature						
Range - barg	0-2.5	0-4	0-6	0-10	0-16	
1/4" BSP	DN63PG-025GM-B-R14-D	DN63PG-025GM-B-R15-D	DN63PG-025GM-B-R16-D	DN63PG-025GM-B-R18-D	DN63PG-025GM-B-R20-D	
Price (£)	42.50	42.50	42.50	42.50	42.50	
3/8" BSP	DN63PG-0375GM-B-R14-D	DN63PG-0375GM-B-R15-D	DN63PG-0375GM-B-R16-D	DN63PG-0375GM-B-R18-D	DN63PG-0375GM-B-R20-D	
Price (£)	42.50	42.50	42.50	42.50	42.50	
1/2" BSP	DN63PG-050GM-B-R14-D	DN63PG-050GM-B-R15-D	DN63PG-050GM-B-R16-D	DN63PG-050GM-B-R18-D	DN63PG-050GM-B-R20-D	
Price (£)	42.50	42.50	42.50	42.50	42.50	
DN63 liquid filled - 63mm diameter dial, Glycerine damping fill, 100°C medium temperature						
Range - barg	0-2.5	0-4	0-6	0-10	0-16	
1/4" BSP	DN63PG-025GM-B-R14-G	DN63PG-025GM-B-R15-G	DN63PG-025GM-B-R16-G	DN63PG-025GM-B-R18-G	DN63PG-025GM-B-R20-G	
Price (£)	46.50	46.50	46.50	46.50	46.50	
3/8" BSP	DN63PG-0375GM-B-R14-G	DN63PG-0375GM-B-R15-G	DN63PG-0375GM-B-R16-G	DN63PG-0375GM-B-R18-G	DN63PG-0375GM-B-R20-G	
Price (£)	46.50	46.50	46.50	46.50	46.50	
1/2" BSP	DN63PG-050GM-B-R14-G	DN63PG-050GM-B-R15-G	DN63PG-050GM-B-R16-G	DN63PG-050GM-B-R18-G	DN63PG-050GM-B-R20-G	
Price (£)	46.50	46.50	46.50	46.50	46.50	
DN100 Dry - 100mm diameter dial, dry case, 200°C medium temperature						
Range - barg	0-2.5	0-4	0-6	0-10	0-16	
1/4" BSP	DN100PG-025GM-B-R14-D	DN100PG-025GM-B-R15-D	DN100PG-025GM-B-R16-D	DN100PG-025GM-B-R18-D	DN100PG-025GM-B-R20-D	
Price (£)	79.00	79.00	79.00	79.00	79.00	
3/8" BSP	DN100PG-0375GM-B-R14-D	DN100PG-0375GM-B-R15-D	DN100PG-0375GM-B-R16-D	DN100PG-0375GM-B-R18-D	DN100PG-0375GM-B-R20-D	
Price (£)	79.00	79.00	79.00	79.00	79.00	
1/2" BSP	DN100PG-050GM-B-R14-D	DN100PG-050GM-B-R15-D	DN100PG-050GM-B-R16-D	DN100PG-050GM-B-R18-D	DN100PG-050GM-B-R20-D	
Price (£)	79.00	79.00	79.00	79.00	79.00	
DN100 liquid filled - 100mm diameter dial, Glycerine damping fill, 100°C medium temperature						
Range - barg	0-2.5	0-4	0-6	0-10	0-16	
1/4" BSP	DN100PG-025GM-B-R14-G	DN100PG-025GM-B-R15-G	DN100PG-025GM-B-R16-G	DN100PG-025GM-B-R18-G	DN100PG-025GM-B-R20-G	
Price (£)	84.00	84.00	84.00	84.00	84.00	
3/8" BSP	DN100PG-0375GM-B-R14-G	DN100PG-0375GM-B-R15-G	DN100PG-0375GM-B-R16-G	DN100PG-0375GM-B-R18-G	DN100PG-0375GM-B-R20-G	
Price (£)	84.00	84.00	84.00	84.00	84.00	
1/2" BSP	DN100PG-050GM-B-R14-G	DN100PG-050GM-B-R15-G	DN100PG-050GM-B-R16-G	DN100PG-050GM-B-R18-G	DN100PG-050GM-B-R20-G	
Price (£)	84.00	84.00	84.00	84.00	84.00	

Certification - For diaphragm seal gauges, material certification covering wetted parts - £10.00 per line item

Calibration Certificate - £12.50 per gauge

Also available

- Alternative pressure ranges
- Back entry connection
- Electrical alarm contacts
- Lower specification/cost options

Diaphragm Seal Pressure Gauges

Where isolation of the gauge mechanism from the process medium is required Staitech offer a range of diaphragm seal gauges. Two sizes of case together with three sizes of diaphragm seal are available. Wetted surfaces are finished to 0.5 microns Ra and all case and transmission fill fluids are FDA compliant.



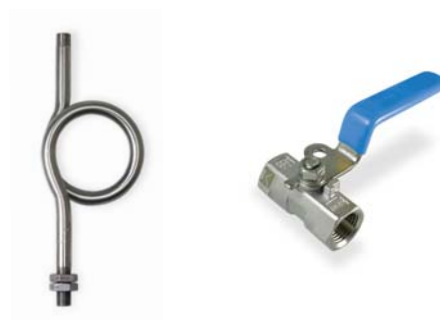
DN63 Dry - 63mm diameter dial, Glycerine damping fill, 150°C medium temperature, 0.5 Ra wetted surfaces				
Range - barg	-1-0-3	0-4	0-7	0-11
3/4" clamp	DN63PG-075C-B-R1-G	DN63PG-075C-B-R3-G	DN63PG-075C-B-R4-G	DN63PG-075C-B-R5-G
Price (£)	285.00	285.00	285.00	285.00

DN100 Dry - 100mm diameter dial, dry case, 200°C medium temperature, 0.5 Ra wetted surfaces					
Range - barg	0-2.5	0-4	0-6	0-10	0-16
1-1/2" clamp	DN100PG-150C-B-R14-D	DN100PG-150C-B-R15-D	DN100PG-150C-B-R16-D	DN100PG-150C-B-R18-D	DN100PG-150C-B-R20-D
Price (£)	187.00	187.00	187.00	187.00	187.00
2" clamp	DN100PG-200C-B-R14-D	DN100PG-200C-B-R15-D	DN100PG-200C-B-R16-D	DN100PG-200C-B-R18-D	DN100PG-200C-B-R20-D
Price (£)	187.00	187.00	187.00	187.00	187.00

DN100 liquid filled - 100mm diameter dial, Glycerine damping fill, 130°C medium temperature, 0.5 Ra wetted surfaces					
Range - barg	0-2.5	0-4	0-6	0-10	0-16
1-1/2" clamp	DN100PG-150C-B-R14-G	DN100PG-150C-B-R15-G	DN100PG-150C-B-R16-G	DN100PG-150C-B-R18-G	DN100PG-150C-B-R20-G
Price (£)	192.00	192.00	192.00	192.00	192.00
2" clamp	DN100PG-200C-B-R14-G	DN100PG-200C-B-R15-G	DN100PG-200C-B-R16-G	DN100PG-200C-B-R18-G	DN100PG-200C-B-R20-G
Price (£)	192.00	192.00	192.00	192.00	192.00

Gauge and Transmitter accessories

For applications where threaded gauges are to be used on systems at elevated temperatures, Ring and U-siphons are available together with simple one-piece isolation ball valves.



316L Stainless Steel Ring and U-Siphons			
	1/4"	3/8"	1/2"
Ring Siphon	RSIP-316-025GM	RSIP-316-0375GM	RSIP-316-050GM
Price (£)	60.00	74.50	96.00
U-Siphon	USIP-316-025GM	USIP-316-0375GM	USIP-316-050GM
Price (£)	44.00	51.00	79.00

One-Piece 316 Stainless Steel Ball Valves			
	1/4"	3/8"	1/2"
Order Ref	BV1P-025GF	BV1P-0375GF	BV1P-050GF
Price (£)	15.00	15.50	17.00

Pressure Transmitters

Pressure transmitters are available with either male thread or diaphragm seal with ASME BPE clamp fitting. All transmitter cases and wetted parts are 316 stainless steel with the diaphragm seal fill fluid FDA compliant. For higher temperature applications threaded units can be used in conjunction with a barrier siphon, or in the case of diaphragm sealed instruments, can be supplied with extended cooling element.



Model SA-11

Threaded Pressure Transmitters

Model S-10 - 0.5% accuracy, 100°C medium temperature, 4-20mA output, DIN Form A plug connector					
Range - barg	0-2.5	0-4	0-6	0-10	0-16
1/4" BSP	PTRAN-025GM-100-R14-P	PTRAN-025GM-100-R15-P	PTRAN-025GM-100-R16-P	PTRAN-025GM-100-R18-P	PTRAN-025GM-100-R19-P
Price (£)	215.00	215.00	215.00	215.00	215.00
1/2" BSP	PTRAN-050GM-100-R14-P	PTRAN-050GM-100-R15-P	PTRAN-050GM-100-R16-P	PTRAN-050GM-100-R18-P	PTRAN-050GM-100-R19-P
Price (£)	215.00	215.00	215.00	215.00	215.00

Diaphragm Seal Pressure Transmitters

Model SA-11 - 0.5% accuracy, 150°C medium temperature, 4-20mA output, DIN Form A plug connector					
Range - barg	0-2.5	0-4	0-6	0-10	0-16
1-1/2" clamp	PTRAN-150C-150-R14-P	PTRAN-150C-150-R15-P	PTRAN-150C-150-R16-P	PTRAN-150C-150-R18-P	PTRAN-150C-150-R19-P
Price (£)	367.00	367.00	367.00	367.00	367.00
2" clamp	PTRAN-200C-150-R14-P	PTRAN-200C-150-R15-P	PTRAN-200C-150-R16-P	PTRAN-200C-150-R18-P	PTRAN-200C-150-R19-P
Price (£)	397.00	397.00	397.00	397.00	397.00

Model SA-10 - 0.5% accuracy, 200°C medium temperature, 4-20mA output, DIN Form A plug connector		
Range - barg	0-6	0-10
1-1/2" clamp	PTRAN-150C-200-R16-P	PTRAN-150C-200-R18-P
Price (£)	575.00	575.00
2" clamp	PTRAN-200C-200-R16-P	PTRAN-200C-200-R18-P
Price (£)	620.00	620.00

Certification - For diaphragm seal transmitters, material certification covering wetted parts - £10.00 per line item

Calibration Certificate - £15.00 per transmitter

Also available

- Alternative pressure ranges
- Cable outlet

Transmitter Indicator Head

An indicator head can be fitted to any of the threaded or diaphragm seal pressure transmitters offered above. The loop powered IP65 rated unit provides a local read-out with simultaneous signal transmission.



Order Ref.	Price(£)
Model A-AI-1	160.00

Pressure/Level Transmitters

The Series 2000 and 8000 instruments are suitable for both pressure and level measuring applications. The measuring span of both models is fully adjustable, with the Series 2000 having an in-head programmer with digital display. Units are available with 1-1/2" or 2" clamp connection, or with 62/85mm weld pad fitting. Both models are suitable for applications where SIP is performed at up to 140°C for 45 minutes.



Series 8000



Series 2000

Diaphragm Seal Pressure/Level Transmitters

Series 2000 - Digital programmable, 0.1% accuracy, 100°C medium temperature, 4-20mA output, PG9 cable gland				
Range - barg	0-0.4	0-1.2	0-10	0-30
1-1/2" clamp	-	-	2000-150C-100-R3	2000-150C-100-R4
Price (£)	-	-	890.00	890.00
2" clamp	2000-200C-100-R1	2000-200C-100-R2	2000-200C-100-R3	2000-200C-100-R4
Price (£)	1,008.00	1,008.00	1,008.00	1,008.00
62mm weld pad	2000-62W-100-R1	2000-62W-100-R2	2000-62W-100-R3	2000-62W-100-R4
Price (£)	1,003.00	1,003.00	1,003.00	1,003.00

Series 8000 - 0.2% accuracy, 100°C medium temperature, 4-20mA output, PG9 cable gland					
Range - barg	0-0.4	0-0.7	0-1.5	0-4	0-10
1-1/2" clamp	-	-	-	8000-150C-100-R4	8000-150C-100-R5
Price (£)	-	-	-	650.00	650.00
2" clamp	8000-200C-100-R1	8000-200C-100-R2	8000-200C-100-R3	8000-200C-100-R4	8000-200C-100-R5
Price (£)	720.00	720.00	720.00	720.00	720.00
62mm weld pad	8000-62W-100-R1	8000-62W-100-R2	8000-62W-100-R3	8000-62W-100-R4	8000-62W-100-R5
Price (£)	715.00	715.00	715.00	715.00	715.00

Note: For 85mm weld pad substitute 85W for 62W

Certification - Material certification covering wetted parts - £38.00 per line item

Calibration Certificate - £18.50 per transmitter

Also available

- Remote electronics housing with 150°C continuous operating limit
- High temperature units suitable for 200°C
- Alternative pressure ranges

Thermometers & Temperature Sensors

Staitech also offer a wide range of thermometers and temperature sensors for both standard and high purity installations. Instruments are available with thermowells if required to facilitate calibration or replacement without compromising the integrity of a system. Where an electrical interface is required sensors can be fitted with an in-head transmitter to give a 4-20mA or similar output



HSG01 Sight Glass Discs

Sight glass discs fit on to standard ASME BPE clamp fittings. Each disc has a fused borosilicate glass viewing aperture to allow unobstructed viewing. A unit with lamp fitting and lamp is available for tank or back lighting applications.



HSG01 - 316L with Borosilicate glass, 0.5 Ra					
	1-1/2"	2"	2-1/2"	3"	4"
Price (£)	130.00	138.00	155.00	179.00	240.00
Order Ref	HSG01-150C-BO	HSG01-200C-BO	HSG01-250C-BO	HSG01-300C-BO	HSG01-400C-BO
HSG01 with back light - 20 watts without push button					
	1-1/2"	2"	2-1/2"	3"	4"
Price (£)	496.00	477.00	509.00	604.00	637.00
Order Ref	HSG01-150C-BO-USL33-20W	HSG01-200C-BO-USL33-20W	HSG01-250C-BO-USL33-20W	HSG01-300C-BO-USL35-20W	HSG01-400C-BO-USL35-20W
HSG01 with back light - 50 watts with push button					
	1-1/2"	2"	2-1/2"	3"	4"
Price (£)	491.00	499.00	531.00	625.00	658.00
Order Ref	HSG01-150C-BO-USL33-50W	HSG01-200C-BO-USL33-50W	HSG01-250C-BO-USL33-50W	HSG01-300C-BO-USL35-50W	HSG01-400C-BO-USL35-50W

Certification - Material certification covering disc - £8.50 per line item.

HSG02 In-line Sight Glasses

Designed for applications where through vision is required, HSG02 sight glasses comprise 316L stainless steel body with toughened borosilicate glass lens and a range of FDA and USP Class VI compliant seals. All units have clamp ends, are rated to 10 barg with wetted surfaces finished to 0.4 microns Ra.



EPDM seals - Black (FDA compliant)								
	1/2"	3/4"	1"	1-1/2"	2"	2-1/2"	3"	4"
Price (£)	202.00	226.00	270.00	318.00	388.00	415.00	465.00	735.00
Order Ref	HSG02-050C-EBK	HSG02-075C-EBK	HSG02-100C-EBK	HSG02-150C-EBK	HSG02-200C-EBK	HSG02-250C-EBK	HSG02-300C-EBK	HSG02-400C-EBK
EPDM seals - Black (FDA & USP Class VI compliant)								
	1/2"	3/4"	1"	1-1/2"	2"	2-1/2"	3"	4"
Price (£)	208.50	234.00	278.00	326.00	396.00	423.00	475.00	747.00
Order Ref	HSG02-050C-EBKU	HSG02-075C-EBKU	HSG02-100C-EBKU	HSG02-150C-EBKU	HSG02-200C-EBKU	HSG02-250C-EBKU	HSG02-300C-EBKU	HSG02-400C-EBKU
Viton seals - Black (FDA compliant)								
	1/2"	3/4"	1"	1-1/2"	2"	2-1/2"	3"	4"
Price (£)	205.00	229.00	274.00	324.00	396.00	425.00	477.00	750.00
Order Ref	HSG02-050C-VBK	HSG02-075C-VBK	HSG02-100C-VBK	HSG02-150C-VBK	HSG02-200C-VBK	HSG02-250C-VBK	HSG02-300C-VBK	HSG02-400C-VBK
Silicone seals - Red (FDA compliant)								
	1/2"	3/4"	1"	1-1/2"	2"	2-1/2"	3"	4"
Price (£)	204.00	228.00	272.00	320.00	391.00	418.00	469.00	740.00
Order Ref	HSG02-050C-SR	HSG02-075C-SR	HSG02-100C-SR	HSG02-150C-SR	HSG02-200C-SR	HSG02-250C-SR	HSG02-300C-SR	HSG02-400C-SR
FEP-Silicone seals (FDA & USP class VI compliant)								
	1/2"	3/4"	1"	1-1/2"	2"	2-1/2"	3"	4"
Price (£)	212.00	232.00	276.00	325.00	395.00	422.00	473.00	745.00
Order Ref	HSG02-050C-FEPS	HSG02-075C-FEPS	HSG02-100C-FEPS	HSG02-150C-FEPS	HSG02-200C-FEPS	HSG02-250C-FEPS	HSG02-300C-FEPS	HSG02-400C-FEPS

HSG03 In-line Sight Glasses

Similar in design to the HSG02, the HSG03 is once again intended for applications where through vision is required. Being of bolted construction the HSG03 can be used in applications where twisting within the piping system may be possible. The HSG03 is available with both clamp and weld end connections.



HSG03 with clamp end connections

EPDM seals - Black (FDA compliant)					
	1/2"	3/4"	1"	1-1/2"	2"
Price (£)	225.00	245.00	293.00	345.00	420.00
Order Ref	HSG03-050C-EBK	HSG03-075C-EBK	HSG03-100C-EBK	HSG03-150C-EBK	HSG03-200C-EBK
EPDM seals - Black (FDA & USP Class VI compliant)					
	1/2"	3/4"	1"	1-1/2"	2"
Price (£)	231.50	253.00	301.00	353.00	428.00
Order Ref	HSG03-050C-EBKU	HSG03-075C-EBKU	HSG03-100C-EBKU	HSG03-150C-EBKU	HSG03-200C-EBKU
Viton seals - Black (FDA compliant)					
	1/2"	3/4"	1"	1-1/2"	2"
Price (£)	228.00	248.00	297.00	351.00	423.00
Order Ref	HSG03-050C-VBK	HSG03-075C-VBK	HSG03-100C-VBK	HSG03-150C-VBK	HSG03-200C-VBK
Silicone seals - Red (FDA compliant)					
	1/2"	3/4"	1"	1-1/2"	2"
Price (£)	227.00	247.00	295.00	347.00	423.00
Order Ref	HSG03-050C-SR	HSG03-075C-SR	HSG03-100C-SR	HSG03-150C-SR	HSG03-200C-SR
FEP-Silicone seals (FDA & USP Class VI compliant)					
	1/2"	3/4"	1"	1-1/2"	2"
Price (£)	235.00	251.00	299.00	352.00	427.00
Order Ref	HSG03-050C-FEPS	HSG03-075C-FEPS	HSG03-100C-FEPS	HSG03-150C-FEPS	HSG03-200C-FEPS

HSG03 with weld end connections

EPDM seals - Black (FDA compliant)					
	1/2"	3/4"	1"	1-1/2"	2"
Price (£)	248.00	270.00	322.00	380.00	462.00
Order Ref	HSG03-050W-EBK	HSG03-075W-EBK	HSG03-100W-EBK	HSG03-150W-EBK	HSG03-200W-EBK
EPDM seals - Black (FDA & USP Class VI compliant)					
	1/2"	3/4"	1"	1-1/2"	2"
Price (£)	254.50	278.00	330.00	388.00	470.00
Order Ref	HSG03-050W-EBKU	HSG03-075W-EBKU	HSG03-100W-EBKU	HSG03-150W-EBKU	HSG03-200W-EBKU
Viton seals - Black (FDA compliant)					
	1/2"	3/4"	1"	1-1/2"	2"
Price (£)	251.00	273.00	326.00	386.00	470.00
Order Ref	HSG03-050W-VBK	HSG03-075W-VBK	HSG03-100W-VBK	HSG03-150W-VBK	HSG03-200W-VBK
Silicone seals - Red (FDA compliant)					
	1/2"	3/4"	1"	1-1/2"	2"
Price (£)	250.00	272.00	324.00	382.00	465.00
Order Ref	HSG03-050W-SR	HSG03-075W-SR	HSG03-100W-SR	HSG03-150W-SR	HSG03-200W-SR
FEP-Silicone seals (FDA & USP Class VI compliant)					
	1/2"	3/4"	1"	1-1/2"	2"
Price (£)	258.00	276.00	328.00	387.00	469.00
Order Ref	HSG03-050W-FEPS	HSG03-075W-FEPS	HSG03-100W-FEPS	HSG03-150W-FEPS	HSG03-200W-FEPS

Certification - Material covering all wetted parts - £8.50 per line item, all models .

Also available

• USP Class VI Viton and Silicone seals.

HSG04 Full-View Sight Glasses

The HSG04 has an unobstructed viewing aperture allowing through vision from any angle. Wetted parts are 316L stainless steel with a toughened borosilicate glass viewing lens and a range of FDA and USP Class VI compliant seals. Alternative lengths are also available with this design.



EPDM seals - Black (FDA compliant)					
	1/2"	3/4"	1"	1-1/2"	2"
Price (£)	240.00	250.00	310.00	325.00	395.00
Order Ref	HSG04-050C-EBK	HSG04-075C-EBK	HSG04-100C-EBK	HSG04-150C-EBK	HSG04-200C-EBK
EPDM seals - Black (FDA & USP Class VI compliant)					
	1/2"	3/4"	1"	1-1/2"	2"
Price (£)	246.50	258.00	318.00	333.00	403.00
Order Ref	HSG04-050C-EBKU	HSG04-075C-EBKU	HSG04-100C-EBKU	HSG04-150C-EBKU	HSG04-200C-EBKU
Viton seals - Black (FDA compliant)					
	1/2"	3/4"	1"	1-1/2"	2"
Price (£)	243.00	253.00	314.00	331.00	403.00
Order Ref	HSG04-050C-VBK	HSG04-075C-VBK	HSG04-100C-VBK	HSG04-150C-VBK	HSG04-200C-VBK
Silicone seals - Red (FDA compliant)					
	1/2"	3/4"	1"	1-1/2"	2"
Price (£)	242.00	252.00	312.00	327.00	398.00
Order Ref	HSG04S-050C-SR	HSG04-075C-SR	HSG04-100C-SR	HSG04-150C-SR	HSG04-200C-SR
FEP-Silicone seals (FDA & USP class VI compliant)					
	1/2"	3/4"	1"	1-1/2"	2"
Price (£)	250.00	256.00	316.00	332.00	402.00
Order Ref	HSG04-050C-FEPS	HSG04-075C-FEPS	HSG04-100C-FEPS	HSG04-150C-FEPS	HSG04-200C-FEPS

Certification - Material covering all wetted parts - £8.50 per line item, all models

Also available · USP Class VI Viton and Silicone seals · Alternative lengths · Larger sizes · Weld end connections

Knock Shield Kits

For applications where protection of the glass viewing tube is required Polycarbonate knock shields are available. A knock shield can be fitted to any model sight glass without the need to dismantle the unit.



Knock Shield Kits					
HSG02	1/2"	3/4"	1"	1-1/2"	2"
Price (£)	48.00	36.00	60.00	45.00	55.00
Order Ref	HSG02-KSKIT-050	HSG02-KSKIT-075	HSG02-KSKIT-100	HSG02-KSKIT-150	HSG02-KSKIT-200
HSG03	1/2"	3/4"	1"	1-1/2"	2"
Price (£)	40.00	29.00	45.00	37.50	51.00
Order Ref	HSG03-KSKIT-050	HSG03-KSKIT-075	HSG03-KSKIT-100	HSG03-KSKIT-150	HSG03-KSKIT-200
HSG04	1/2"	3/4"	1"	1-1/2"	2"
Price (£)	32.00	32.00	71.00	71.00	88.00
Order Ref	HSG04-KSKIT-050	HSG04-KSKIT-075	HSG04-KSKIT-100	HSG04-KSKIT-150	HSG04-KSKIT-200

Butterfly Valves

Standard butterfly valves are supplied with black EPDM seal and clamp end connections. Two styles of handle are available; 2-position nylon and 5-position stainless steel. Wetted surfaces are finished to 0.8 microns Ra. Alternative seal materials to include Viton and Nitrile rubber are also available as are valves with plain ends for welding.



Nylon on/off handle, EPDM seal, clamp connections

	1"	1-1/2"	2"	2-1/2"	3"	4"
Price (£)	75.00	75.00	91.00	102.00	128.00	-
Order Ref	HBV03-100C-EBK-N	HBV03-150C-EBK-N	HBV03-200C-EBK-N	HBV03-250C-EBK-N	HBV03-300C-EBK-N	-

5-position stainless steel handle, EPDM seal, clamp connections

	1"	1-1/2"	2"	2-1/2"	3"	4"
Price (£)	81.00	81.00	97.00	108.00	133.00	191.00
Order Ref	HBV03-100C-EBK-S	HBV03-150C-EBK-S	HBV03-200C-EBK-S	HBV03-250C-EBK-S	HBV03-300C-EBK-S	HBV03-400C-EBK-S

50SN & 77SN Ball Valves

The 50SN and 77SN valve ranges are suitable for use with a wide range of fluids, gases and steam. Standard valves have PTFE cavity filled seats and either clamp or short weld end connections. The 77SN valve is ATEX certified and has an ISO NAMUR actuator mounting pad as standard. Wetted surfaces for all valves are 0.5 microns Ra.



50SN with weld connections

	1/2"	3/4"	1"	1-1/2"	2"	2-1/2"	3"	4"
Price (£)	48.50	51.50	64.00	117.00	161.00	318.00	421.00	773.00
Order Ref	50SNC-050W-050W	50SNC-075W-075W	50SNC-100W-100W	50SNC-150W-150W	50SNC-200W-200W	50SNC-250W-250W	50SNC-300W-300W	50SNC-400W-400W

50SN with clamp connections

	1/2"	3/4"	1"	1-1/2"	2"	2-1/2"	3"	4"
Price (£)	47.50	49.50	60.00	111.50	154.00	298.00	398.00	742.00
Order Ref	50SNC-050C-050C	50SNC-075C-075C	50SNC-100C-100C	50SNC-150C-150C	50SNC-200C-200C	50SNC-250C-250C	50SNC-300C-300C	50SNC-400C-400C

77SN with weld connections, ATEX certified

	1/2"	3/4"	1"	1-1/2"	2"	2-1/2"	3"	4"
Price (£)	65.00	67.00	88.00	177.00	240.00	464.00	628.00	978.00
Order Ref	77SNC-050W-050W	77SNC-075W-075W	77SNC-100W-100W	77SNC-150W-150W	77SNC-200W-200W	77SNC-250W-250W	77SNC-300W-300W	77SNC-400W-400W

77SN with clamp connections, ATEX certified

	1/2"	3/4"	1"	1-1/2"	2"	2-1/2"	3"	4"
Price (£)	63.00	65.00	82.50	169.00	232.00	442.00	566.00	942.00
Order Ref	77SNC-050C-050C	77SNC-075C-075C	77SNC-100C-100C	77SNC-150C-150C	77SNC-200C-200C	77SNC-250C-250C	77SNC-300C-300C	77SNC-400C-400C

Certification - Material certification covering body and ends with certificate of conformity to cover the ball and stem - £8.50 per line item

Also available

- Actuator packages • Spring return handles
- Stem extensions • Alternative seat materials

SB7 - Hygienic Ball Valves

The SB7 range of high purity ball valves fully satisfy current ASME BPE criteria. Valves are available with open TFM seats(SB7) or cavity filled TFM seats(SBC7). To facilitate orbital welding extended end connections are available together with clamp and mixed connections. All valves have an ISO NAMUR actuator mounting pad as standard.



SB7 with extended weld connections								
	1/2"	3/4"	1"	1-1/2"	2"	2-1/2"	3"	4"
Price (£)	168.00	180.00	232.00	344.00	444.00	773.00	1,024.00	1,656.00
Order Ref	SB7-050W-050W	SB7-075W-075W	SB7-100W-100W	SB7-150W-150W	SB7-200W-200W	SB7-250W-250W	SB7-300W-300W	SB7-400W-400W
SB7 with clamp connections								
	1/2"	3/4"	1"	1-1/2"	2"	2-1/2"	3"	4"
Price (£)	168.00	180.00	232.00	344.00	444.00	773.00	1,024.00	1,656.00
Order Ref	SB7-050C-050C	SB7-075C-075C	SB7-100C-100C	SB7-150C-150C	SB7-200C-200C	SB7-250C-250C	SB7-300C-300C	SB7-400C-400C
SB7 with clamp x extended weld connections								
	1/2"	3/4"	1"	1-1/2"	2"	2-1/2"	3"	4"
Price (£)	168.00	180.00	232.00	344.00	444.00	773.00	1,024.00	1,656.00
Order Ref	SB7-050C-050W	SB7-075C-075W	SB7-100C-100W	SB7-150C-150W	SB7-200C-200W	SB7-250C-250W	SB7-300C-300W	SB7-400C-400W
SBC7 with extended weld connections								
	1/2"	3/4"	1"	1-1/2"	2"	2-1/2"	3"	4"
Price (£)	190.00	207.00	270.00	388.50	566.50	949.00	1,354.00	2,120.00
Order Ref	SBC7-050W-050W	SBC7-075W-075W	SBC7-100W-100W	SBC7-150W-150W	SBC7-200W-200W	SBC7-250W-250W	SBC7-300W-300W	SBC7-400W-400W
SBC7 with clamp connections								
	1/2"	3/4"	1"	1-1/2"	2"	2-1/2"	3"	4"
Price (£)	190.00	207.00	270.00	388.50	566.50	949.00	1,354.00	2,120.00
Order Ref	SBC7-050C-050C	SBC7-075C-075C	SBC7-100C-100C	SBC7-150C-150C	SBC7-200C-200C	SBC7-250C-250C	SBC7-300C-300C	SBC7-400C-400C
SBC7 with clamp x extended weld connections								
	1/2"	3/4"	1"	1-1/2"	2"	2-1/2"	3"	4"
Price (£)	190.00	207.00	270.00	388.50	566.50	949.00	1,354.00	2,120.00
Order Ref	SBC7-050C-050W	SBC7-075C-075W	SBC7-100C-100W	SBC7-150C-150W	SBC7-200C-200W	SBC7-250C-250W	SBC7-300C-300W	SBC7-400C-400W

Certification - Material certification covering body and ends with certificate of conformity to cover the ball and stem - £15.00 per line item

3-Way Ball Valves

Staitech offer a range of 3-way 'L' and 'T' port ball valves with clamp and weld end connections. ATEX certified valves are also available as are pneumatic and electric actuator packages. Contact Staitech for further information



Actuator Packages

A full range of pneumatic and electric actuators are available for use with the 775N and SB7 series valves. In addition to actuators, switch boxes and solenoids can also be supplied for use in both safe and hazardous environments. Contact Staitech for further information

HCV01 and HCV03 Check Valves

The HCV01 check valve is designed to fit between two standard BPE clamp fittings with integral EPDM O-rings forming the joint seal. The surface finish is typically 1.2 microns Ra for the HCV01 range. The HCV03 is an all PTFE valve, the body of which forms it's own joint seal when fitted between two clamp fittings.

Both valve designs are available with 8 and 35 mbar springs and standard or soft seat options.



HCV01 with metal-metal seating				
	3/4"	1"	1-1/2"	2"
8 mbar spring	HCV01-075C-M-08	HCV01-100C-M-08	HCV01-150C-M-08	HCV01-200C-M-08
Price (£)	129.00	136.00	167.00	228.00
35 mbar spring	HCV01-075C-M-35	HCV01-100C-M-35	HCV01-150C-M-35	HCV01-200C-M-35
Price (£)	129.00	136.00	167.00	228.00
HCV01 with EPDM soft seat				
	3/4"	1"	1-1/2"	2"
8 mbar spring	HCV01-075C-EBK-08	HCV01-100C-EBK-08	HCV01-150C-EBK-08	HCV01-200C-EBK-08
Price (£)	139.00	146.00	177.00	238.00
35 mbar spring	HCV01-075C-EBK-35	HCV01-100C-EBK-35	HCV01-150C-EBK-35	HCV01-200C-EBK-35
Price (£)	139.00	146.00	177.00	238.00

HCV03 with standard seating (maximum allowable differential pressure - 3.8 bar)				
	3/4"	1"	1-1/2"	2"
8 mbar spring	HCV03-075C-T-08	HCV03-100C-T-08	HCV03-150C-T-08	HCV03-200C-T-08
Price (£)	123.00	151.00	155.00	194.00
35 mbar spring	HCV03-075C-T-35	HCV03-100C-T-35	HCV03-150C-T-35	HCV03-200C-T-35
Price (£)	123.00	151.00	155.00	194.00
HCV03 with EPDM soft seat (maximum allowable differential pressure - 3.8 bar)				
	3/4"	1"	1-1/2"	2"
8 mbar spring	HCV03-075C-EBK-08	HCV03-100C-EBK-08	HCV03-150C-EBK-08	HCV03-200C-EBK-08
Price (£)	133.00	161.00	165.00	204.00
35 mbar spring	HCV03-075C-EBK-35	HCV03-100C-EBK-35	HCV03-150C-EBK-35	HCV03-200C-EBK-35
Price (£)	133.00	161.00	165.00	204.00

HCV04 Check Valves

The HCV04 range is ideally suited to steam, condensate and process fluid applications. Standard valves have metal-metal seating and a choice of 8 or 35 mbar opening pressure. Wetted surfaces on all valves are finished to 0.5 microns Ra. 1/2" to 1" valves are available in either standard or high capacity configuration.



	1/2" SC	1/2" HC	3/4" SC	3/4" HC	1" SC	1" HC
8 mbar spring	HCV04SC-050C-08	HCV04HC-050C-08	HCV04SC-075C-08	HCV04HC-075C-08	HCV04SC-100C-08	HCV04HC-100C-08
Price (£)	207.00	226.00	207.00	226.00	219.50	267.00
35 mbar spring	HCV04SC-050C-35	HCV04HC-050C-35	HCV04SC-075C-35	HCV04HC-075C-35	HCV04SC-100C-35	HCV04HC-100C-35
Price (£)	207.00	226.00	207.00	226.00	219.00	267.00
	1-1/2"	2"				
8 mbar spring	HCV04-150C-M-08	-				
Price (£)	260.00	-				
35 mbar spring	HCV04-150C-M-35	HCV04-200C-M-35				
Price (£)	260.00	392.00				

Certification - Material certification covering wetted parts - £15.00 per line item.

Also available - 2-1/2" to 4" sizes

HCV02 Hygienic Check Valves

The HCV02 range is intended for use in high purity applications such as WFI systems. Valves are manufactured in 316L stainless steel with a range of seal options. Wetted surfaces are finished to 0.4 microns Ra. The standard opening pressure for the HCV02 range is 35 mbar.



HCV02 - with concentric clamp connections

EPDM seals - Black (FDA compliant)					
	1/2"	3/4"	1"	1-1/2"	2"
Price (£)	237.50	237.50	219.50	251.50	310.00
Order Ref	HCV02-050C-EBK-35	HCV02-075C-EBK-35	HCV02-100C-EBK-35	HCV02-150C-EBK-35	HCV02-200C-EBK-35
EPDM seals - Black (FDA & USP Class VI compliant)					
	1/2"	3/4"	1"	1-1/2"	2"
Price (£)	245.00	245.00	229.50	264.35	334.95
Order Ref	HCV02-050C-EBKU-35	HCV02-075C-EBKU-35	HCV02-100C-EBKU-35	HCV02-150C-EBKU-35	HCV02-200C-EBKU-35
Viton seals - Black (FDA compliant)					
	1/2"	3/4"	1"	1-1/2"	2"
Price (£)	240.00	240.00	222.35	255.15	315.90
Order Ref	HCV02-050C-VBK-35	HCV02-075C-VBK-35	HCV02-100C-VBK-35	HCV02-150C-VBK-35	HCV02-200C-VBK-35
Silicone seals - Red (FDA compliant)					
	1/2"	3/4"	1"	1-1/2"	2"
Price (£)	238.85	238.85	220.90	253.25	312.10
Order Ref	HCV02-050C-SR-35	HCV02-075C-SR-35	HCV02-100C-SR-35	HCV02-150C-SR-35	HCV02-200C-SR-35
FEP-Silicone seals (FDA & USP class VI compliant)					
	1/2"	3/4"	1"	1-1/2"	2"
Price (£)	249.80	249.80	232.50	265.50	316.00
Order Ref	HCV02-050C-FEPS-35	HCV02-075C-FEPS-35	HCV02-100C-FEPS-35	HCV02-150C-FEPS-35	HCV02-200C-FEPS-35

HCV02 - with concentric weld end connections

EPDM seals - Black (FDA compliant)					
	1/2"	3/4"	1"	1-1/2"	2"
Price (£)	261.00	261.00	241.00	276.00	341.00
Order Ref	HCV02-050W-EBK-35	HCV02-075W-EBK-35	HCV02-100W-EBK-35	HCV02-150W-EBK-35	HCV02-200W-EBK-35
EPDM seals - Black (FDA & USP Class VI compliant)					
	1/2"	3/4"	1"	1-1/2"	2"
Price (£)	268.50	268.50	251.00	288.50	365.95
Order Ref	HCV02-050W-EBKU-35	HCV02-075W-EBKU-35	HCV02-100W-EBKU-35	HCV02-150W-EBKU-35	HCV02-200W-EBKU-35
Viton seals - Black (FDA compliant)					
	1/2"	3/4"	1"	1-1/2"	2"
Price (£)	263.50	263.50	243.85	279.65	346.90
Order Ref	HCV02-050W-VBK-35	HCV02-075W-VBK-35	HCV02-100W-VBK-35	HCV02-150W-VBK-35	HCV02-200W-VBK-35
Silicone seals - Red (FDA compliant)					
	1/2"	3/4"	1"	1-1/2"	2"
Price (£)	262.35	262.50	220.90	277.75	343.10
Order Ref	HCV02-050W-SR-35	HCV02-075W-SR-35	HCV02-100W-SR-35	HCV02-150W-SR-35	HCV02-200W-SR-35
FEP-Silicone seals (FDA & USP class VI compliant)					
	1/2"	3/4"	1"	1-1/2"	2"
Price (£)	273.00	273.00	254.00	290.00	347.00
Order Ref	HCV02-050W-FEPS-35	HCV02-075W-FEPS-35	HCV02-100W-FEPS-35	HCV02-150W-FEPS-35	HCV02-200W-FEPS-35

HCV02 - with eccentric clamp connections

EPDM seals - Black (FDA compliant)					
	1/2"	3/4"	1"	1-1/2"	2"
Price (£)	280.00	280.00	256.00	285.00	360.00
Order Ref	HCV02E-050C-EBK-35	HCV02E-075C-EBK-35	HCV02E-100C-EBK-35	HCV02E-150C-EBK-35	HCV02E-200C-EBK-35
EPDM seals - Black (FDA & USP Class VI compliant)					
	1/2"	3/4"	1"	1-1/2"	2"
Price (£)	287.50	287.50	266.00	297.85	384.95
Order Ref	HCV02E-050C-EBKU-35	HCV02E-075C-EBKU-35	HCV02E-100C-EBKU-35	HCV02E-150C-EBKU-35	HCV02E-200C-EBKU-35
Viton seals - Black (FDA compliant)					
	1/2"	3/4"	1"	1-1/2"	2"
Price (£)	282.50	282.50	258.85	288.65	365.90
Order Ref	HCV02E-050C-VBK-35	HCV02E-075C-VBK-35	HCV02E-100C-VBK-35	HCV02E-150C-VBK-35	HCV02E-200C-VBK-35
Silicone seals - Red (FDA compliant)					
	1/2"	3/4"	1"	1-1/2"	2"
Price (£)	281.35	281.35	257.40	286.75	362.10
Order Ref	HCV02E-050C-SR-35	HCV02E-075C-SR-35	HCV02E-100C-SR-35	HCV02E-150C-SR-35	HCV02E-200C-SR-35
FEP-Silicone seals (FDA & USP class VI compliant)					
	1/2"	3/4"	1"	1-1/2"	2"
Price (£)	292.30	292.30	269.00	299.00	376.00
Order Ref	HCV02E-050C-FEPS-35	HCV02E-075C-FEPS-35	HCV02E-100C-FEPS-35	HCV02E-150C-FEPS-35	HCV02E-200C-FEPS-35

Certification - Material certification covering wetted parts - £15.00 per line item.

Also available

- 2-1/2" to 4" sizes
- Eccentric weld end valves
- USP Class VI Viton and Silicone seals

Steam Traps

HST20

The HST20 is a low cost Thermostatic trap designed for high purity steam applications. Wetted parts are manufactured from 316L stainless steel with a maximum surface finish of 1.0 micron Ra. The HST20 is available with both clamp and weld end connections.



	1/2"	3/4"	1"
Clamp connections	HST20-050C	HST20-075C	HST20-100C
Price (£)	243.00	253.00	267.00
Weld connections	HST20-050W	HST20-075W	HST20-100W
Price (£)	268.00	278.00	290.00

HST30TC

Whilst the HST30TC shares the same near-to-steam operating characteristic as the HST20, it has a higher internal surface finish specification of 0.5 microns Ra. The HST30TC is available with clamp connections in sizes 1/2" to 1-1/2". Where space is restricted the HST30TCH with horizontal inlet is available.



	1/2"	3/4"	1"	1-1/2"
Vertical connections	HST30TC-050C	HST30TC-075C	HST30TC-100C	HST30TC-150C
Price (£)	362.00	373.00	376.00	397.00
Horizontal inlet	HST30TCH-050C	HST30TCH-075C	HST30TCH-100C	-
Price (£)	465.00	475.00	495.00	-

HST50

The HST50 Thermodynamic steam trap is intended for use in constant pressure applications such as mains drainage where space is restricted. The HST50 is available with 1/2" or 3/4" BPE clamp connections and can be installed in any orientation.



	1/2"	3/4"
Order Ref	HST50-050C	HST50-075C
Price (£)	280.00	285.00

SSC Subcooled Condenser

For applications where the length of vertical cooling leg is restricted, Staitech offer a subcooled condenser. Designed to be installed prior to a steam trap, the cooling fins on the SSC unit help to accelerate the cooling rate of the condensed steam. Further details are available upon request.



Safety Valves

Staitech offer a wide range of safety valves for steam, liquid and gas applications. In order to select an appropriate valve Staitech will require details of the flow medium, flow capacity and set pressure. All valves are PED compliant and tested in accordance with TUV requirements. The 481, 483, 488 and 646 series valves also meet ASME Section VIII criteria.

600 Series

The 600 series safety valves are intended for low flow steam, gas and liquid applications. Wetted parts are 316L stainless steel with an FDA and USP Class VI compliant Isolast seat seal. The 646 series are designed for steam and gas while the 680 series is intended for liquid applications. The inlet fitting on all models is a BPE clamp with a female threaded outlet. A clamp adaptor option is available for the outlet. All valves have a sealed gas tight cap. Wetted inlet surfaces are finished to 0.4 microns Ra, with outlet surfaces as cast/machined.



646 steam and gas valve

Orifice size	10mm	10mm	13mm
Inlet - clamp	1/2"	3/4"	-
Outlet - BSP female	3/4"	3/4"	-
Price (£)	350.00	350.00	-
Order Ref	64610-050C-075GF-I-S	64610-075C-075GF-I-S	-
Inlet - clamp	1/2"	3/4"	3/4"
Outlet - clamp	3/4"	3/4"	1"
Price (£)	388.00	388.00	398.00
Order Ref	64610-050C-075C-I-S	64610-075C-075C-I-S	64613-075C-100C-I-S

680 liquid valve

Orifice size	10mm	10mm	13mm
Inlet - clamp	1/2"	3/4"	-
Outlet - BSP female	3/4"	3/4"	-
Price (£)	350.00	350.00	-
Order Ref	68010-050C-075GF-I-S	68010-075C-075GF-I-S	-
Inlet - clamp	1/2"	3/4"	3/4"
Outlet - clamp	3/4"	3/4"	1"
Price (£)	388.00	388.00	398.00
Order Ref	68010-050C-075C-I-S	68010-075C-075C-I-S	68013-075C-100C-I-S

Certification - Material certification covering wetted parts - £25.00 per valve.

Also available

- Manual lifting device
- Threaded valves

481 Series

The 481 series valves are intended for liquid and gas applications up to 16 barg. Standard valves have an FDA and USP Class VI EPDM seat seal, clamp inlet and threaded outlet. Valves can also be supplied fitted with a threaded clamp outlet adaptor.



481, 316L, EPDM seat seal, inlet 0.4 Ra			
Orifice size	10mm	10mm	10mm
Inlet	1" clamp	1" clamp	1" clamp
Outlet	1/2" BSP	3/4" clamp	1" clamp
Order Ref	481-100C-050GF-E-H2	481-100C-075C-E-H2	481-100C-100C-E-H2
Price (£)	385.00	442.00	452.00

Certification - Material certification covering wetted parts - £25.00 per valve.

483 Series

The 483 series valves are intended for liquid and gas applications up to 16 barg. When fitted with an Perlast seat seal valves are also suitable for steam duty. All valves are fitted with an EPDM bellows which prevents media from entering the spring chamber during discharge. Two orifice sizes and three connection options are available for the 483 valve based on capacity requirements. Standard valves have a sealed gas tight cap with manual rotalift and pneumatic lifting devices also available.



483, 316L, EPDM seat seal, inlet 0.4 Ra, outlet 3.2 Ra			
Orifice size	13mm	13mm	25mm
Inlet - clamp	1"	1-1/2"	1-1/2"
Outlet - clamp	1-1/2"	1-1/2"	2"
Cap type	Sealed	Sealed	Sealed
Order Ref	483-100C-150C-E-H2	483-150C-150C-E-H2	483-150C-200C-E-H2
Price (£)	595.00	640.00	835.00
Cap type	Rotalift	Rotalift	Rotalift
Order Ref	483-100C-150C-E-H4	483-150C-150C-E-H4	483-150C-200C-E-H4
Price (£)	630.00	675.00	895.00
Cap type	Pneumatic	Pneumatic	Pneumatic
Order Ref	483-100C-150C-E-H8	483-150C-150C-E-H8	483-150C-200C-E-H8
Price (£)	1,108.00	1,143.00	1,640.00

483, 316L, Perlast seat seal, inlet 0.4 Ra, outlet 3.2 Ra			
Orifice size	13mm	13mm	25mm
Inlet - clamp	1"	1-1/2"	1-1/2"
Outlet - clamp	1-1/2"	1-1/2"	2"
Cap type	Sealed	Sealed	Sealed
Order Ref	483-100C-150C-P-H2	483-150C-150C-P-H2	483-150C-200C-P-H2
Price (£)	629.00	674.00	877.00
Cap type	Rotalift	Rotalift	Rotalift
Order Ref	483-100C-150C-P-H4	483-150C-150C-P-H4	483-150C-200C-P-H4
Price (£)	664.00	709.00	937.00
Cap type	Pneumatic	Pneumatic	Pneumatic
Order Ref	483-100C-150C-P-H8	483-150C-150C-P-H8	483-150C-200C-P-H8
Price (£)	1,142.00	1,177.00	1,682.00

Certification - Material certification covering wetted parts - £25.00 per valve.

488 Series

The 488 series valves are intended for liquid and gas applications up to 16 barg. When fitted with an Perlast seat seal valves are also suitable for steam duty. All valves are fitted with an EPDM bellows which prevents media from entering the spring chamber during discharge. Three orifice sizes and three connection options are available for the 488 valve based on capacity requirements. Standard valves have a sealed gas tight cap with manual rotalift and pneumatic lifting devices also available.



488, 316L, EPDM seat seal, inlet 0.4 Ra, outlet 3.2 Ra			
Orifice size	23mm	37mm	46mm
Inlet - clamp	1-1/2"	2"	3"
Outlet - clamp	2"	3"	4-1/2"
Cap type	Sealed	Sealed	Sealed
Order Ref	488-150C-200C-E-H2	488-200C-300C-E-H2	488-300C-450C-E-H2
Price (£)	1,525.00	2,056.00	2,400.00
Cap type	Rotalift	Rotalift	Rotalift
Order Ref	488-150C-200C-E-H4	488-200C-300C-E-H4	488-300C-450C-E-H4
Price (£)	1,590.00	2,154.00	2,499.00
Cap type	Pneumatic	Pneumatic	Pneumatic
Order Ref	488-150C-200C-E-H8	488-200C-300C-E-H8	488-300C-450C-E-H8
Price (£)	2,423.00	3,117.00	3,461.00

488, 316L, Perlast seat seal, inlet 0.4 Ra, outlet 3.2 Ra			
Orifice size	23mm	37mm	46mm
Inlet - clamp	1-1/2"	2"	3"
Outlet - clamp	2"	3"	4-1/2"
Cap type	Sealed	Sealed	Sealed
Order Ref	488-150C-200C-P-H2	488-200C-300C-P-H2	488-300C-450C-P-H2
Price (£)	1,607.00	2,156.00	2,510.00
Cap type	Rotalift	Rotalift	Rotalift
Order Ref	488-150C-200C-P-H4	488-200C-300C-P-H4	488-300C-450C-P-H4
Price (£)	1,672.00	2,254.00	2,609.00
Cap type	Pneumatic	Pneumatic	Pneumatic
Order Ref	488-150C-200C-P-H8	488-200C-300C-P-H8	488-300C-450C-P-H8
Price (£)	2,505.00	3,217.00	3,571.00

Certification - Material certification covering wetted parts - £35.00 per valve.

Also available

- Flanged and screwed valves
- Lift indicator switches

Control Valves

Staitech offer a range of self acting, pneumatic and electrically actuated control valves for pressure, back pressure, flow control and tank blanketing applications. In addition to valves, a range of controllers and sensors are also available.



Steam Separators and Filters

Separators are designed to remove entrained moisture from steam supplies. Units are available either fully welded or with removable end caps and internal baffle plate. For applications requiring a filtered steam supply, Staitech offer a range of stainless steel housing together with sintered and pleated filter cartridge elements.



Heat Exchangers

Staitech represent Exergy LLC in the UK and Ireland. Exergy specialise in compact heat exchangers for industrial and high purity applications. The full range of Exergy products can be viewed at Exergyllc.com.



Steam Quality Testing Equipment

Steam quality testing in accordance with the HTM2010 and HTM2032 standards is becoming more prevalent in the Pharmaceutical industry today. To facilitate such testing Staitech offer a full range of testing equipment to include non condensable gas test units, pitot tubes and test elbows.





Staitech

PO Box 152
Stroud
Gloucestershire
GL6 8YT

Tel: +44 (0)1453 882736
Fax: +44 (0)1453 882744
E-mail: sales@staitech.com
www.staitech.com

Issue 09/09